

Spotswood Primary School (3659)

2008 School Level Report

Please check the data in this report. If, after comparing it with your own records, you deem it to be incorrect or incomplete, follow the directions on the following website:

- <http://www.education.vic.gov.au/management/schoolimprovement/performancecd/>
then select 'School Performance Reports'.
-
-

Contents

| | Page No. |
|---|-----------------|
| Privacy | 3 |
| SFO Density and LBOTE | 4 |
| Assessment of Reading Prep to Year 2 | 5-6 |
| Teacher Judgments against the VELs | 7-15 |
| NAPLAN - Reading | 16 |
| - Writing | 17 |
| - Numeracy | 18 |
| AIM - Reading | 19 |
| - Mathematics | 20 |
| Teacher Assessment of Student Progress (PSD students) | 21-22 |
| Enrolment | 23 |
| Student Absence | 24 |
| Opinion Surveys - Parent | 25 |
| - Staff | 26 |
| Performance & Development Culture | 27 |
| Staff Sick Leave | 28 |
| Teaching Staff Retention | 29 |
| Bank Balances | 30 |

Privacy

When reporting on the school's performance to the school community, care must be taken to avoid the disclosure of information that can directly or indirectly identify an individual. This may be a particular issue when reporting on the achievement of specific cohorts of students or the opinions of staff where there are small numbers.

In situations where privacy cannot be assured, schools may wish to report on the mean result or provide a written comment on school, year level or cohort performance.

Where the School Level Report is provided to school council members as part of any annual reporting process, or used for discussion on a school's performance, such as in consultation with the school community in the school self-evaluation process, it is important to remind school community members of their duty to only use this information for the purpose it was provided, and that the material must be kept confidential.

It is important to note that information that identifies an individual or can be used with other readily available information to identify a person is now protected by the *Information Privacy Act 2000* (<http://www.education.vic.gov.au/about/deptpolicies/informationprivacy.htm>).

SFO Density and LBOTE

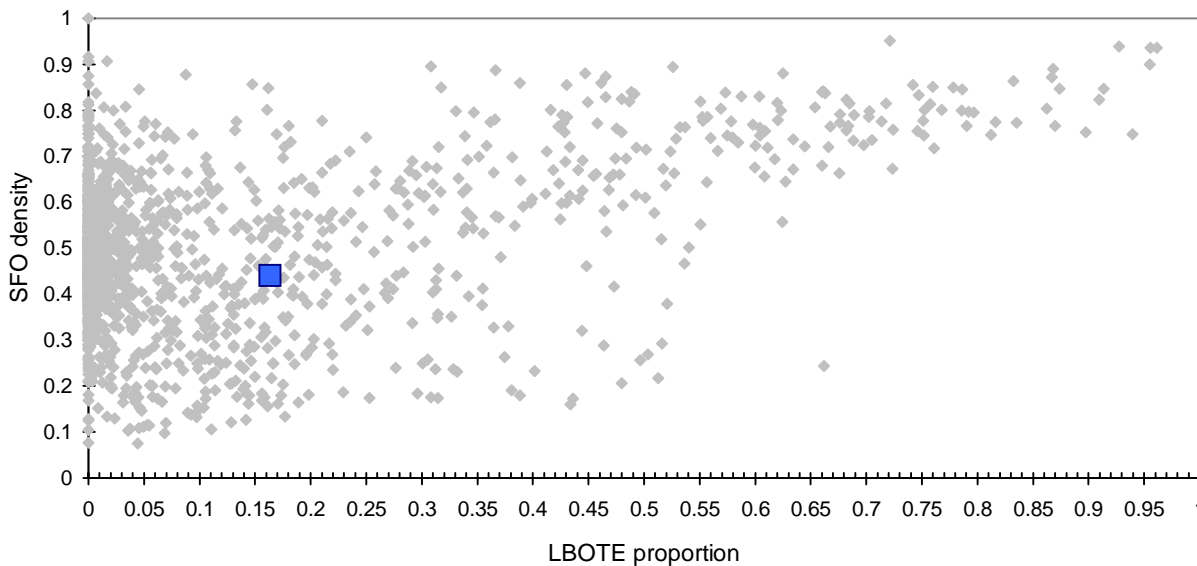
School no: 3659

School name: Spotswood Primary School

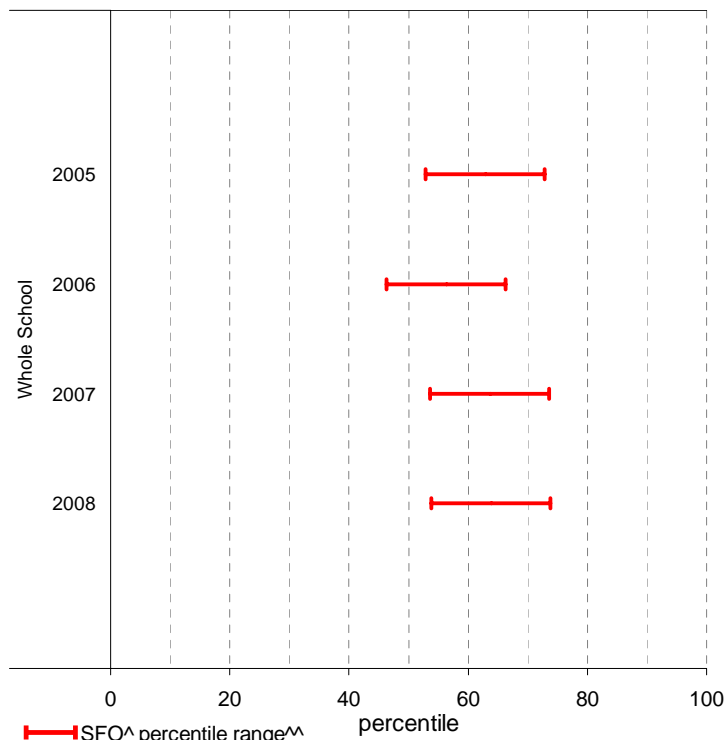
Explanation: The chart below plots the school's 2008 SFO (Student Family Occupation) density[^] and LBOTE (Language Background Other Than English) proportion* against that of all government schools. This school is highlighted as a square on the chart.

| | 2001 | 2002 | 2003 | 2004 | 2005 | 2006 | 2007 | 2008 |
|----------------------------|------|------|------|------|------|------|------|------|
| SFO density [^] : | | | | | 0.43 | 0.45 | 0.43 | 0.44 |
| LBOTE proportion*: | 0.08 | 0.06 | 0.04 | 0.04 | 0.11 | 0.15 | 0.14 | 0.16 |

School's 2008 SFO density and LBOTE proportion against that of all government schools



School's SFO[^] percentile range^{^^} over time



Notes: [^] The higher the SFO density, the lower the SFO percentile and the lower the socio-economic status (SES).
^{^^} The school's SFO percentile range shows the 20% of schools with an SFO Density most like this school.
 * From 2007, a student is LBOTE if either the student or one parent/guardian speaks a language other than English at home. Prior to 2007, a student is LBOTE if the student or one of the parents was born in a non-English speaking country.

Assessment of Reading: Prep to Year 2

School no: 3659

School name: Spotswood Primary School

Explanation: Students' ability to read unsighted text is assessed at the end of each year. The data presented here includes 'deemed not capable' students.

More detailed information (including data where deemed not capable students are excluded) is available in the Assessment of Reading report, available from the School Performance Reports website.

Source of data: Data transmitted from school to DEECD via an online web-form.

| | Prep | | | | | | | | | | Year 1 | | | | | | | | | | Year 2 | | | | | | | | | | | | |
|-------------------------|-------------|-------------|-------------|-------------|-------------|-------------|-------------|-------------|-------------|--------------|-------------|-------------|--------------|-------------|--------------|-------------|--------------|-------------|-------------|-------------|-------------|-------------|-------------|--------------|-------------|--------------|-------------|--------------|-------------|--------------|-------------|-------------|-------------|
| | School | | | | | | | | | State | School | | | | | | | | | State | School | | | | | | | | | State | | | |
| | 2004 | | 2005 | | 2006 | | 2007 | | 2008 | | 2008 | 2004 | | 2005 | | 2006 | | 2007 | | 2008 | | 2008 | 2004 | | 2005 | | 2006 | | 2007 | | 2008 | | 2008 |
| | (No.) | % | (No.) | % | (No.) | % | (No.) | % | (No.) | % | % | (No.) | % | (No.) | % | (No.) | % | (No.) | % | (No.) | % | % | (No.) | % | (No.) | % | (No.) | % | (No.) | % | % | | |
| Level 1 | | | | | | | | | | | | | | | | | | | | | | | | | | | | | | | | | |
| 100% | (17) | 58.6 | (14) | 82.4 | (10) | 52.6 | (11) | 44.0 | (8) | 50.0 | 69.0 | (32) | 97.0 | (30) | 100.0 | (17) | 94.4 | (13) | 76.5 | (21) | 77.8 | 94.7 | | | | | | | | | | | |
| 90-99% | (10) | 34.5 | (2) | 11.8 | (7) | 36.8 | (10) | 40.0 | (8) | 50.0 | 25.4 | (1) | 3.0 | | | (1) | 5.6 | (3) | 17.6 | (5) | 18.5 | 4.7 | | | | | | | | | | | |
| 80-89% | | | | | (1) | 5.3 | (1) | 4.0 | | | 2.3 | | | | | | | | | | | 0.2 | | | | | | | | | | | |
| 51-79% | (2) | 6.9 | (1) | 5.9 | (1) | 5.3 | (1) | 4.0 | | | 1.5 | | | | | | | | | | | 0.2 | | | | | | | | | | | |
| 50% or below | | | | | | | (2) | 8.0 | | | 1.7 | | | | | | (1) | 5.9 | (1) | 3.7 | | 0.3 | | | | | | | | | | | |
| Total | (29) | 100.0 | (17) | 100.0 | (19) | 100.0 | (25) | 100.0 | (16) | 100.0 | 100.0 | (33) | 100.0 | (30) | 100.0 | (18) | 100.0 | (17) | 100.0 | (27) | 100.0 | 100.0 | | | | | | | | | | | |
| Subtotal 90-100% | (27) | 93.1 | (16) | 94.1 | (17) | 89.5 | (21) | 84.0 | (16) | 100.0 | 94.5 | (33) | 100.0 | (30) | 100.0 | (18) | 100.0 | (16) | 94.1 | (26) | 96.3 | 99.4 | | | | | | | | | | | |
| Level 5 | | | | | | | | | | | | | | | | | | | | | | | | | | | | | | | | | |
| 100% | (7) | 24.1 | (9) | 52.9 | (6) | 31.6 | (6) | 24.0 | (8) | 50.0 | 45.3 | (27) | 81.8 | (26) | 86.7 | (16) | 88.9 | (9) | 52.9 | (21) | 77.8 | 81.0 | (29) | 100.0 | (28) | 100.0 | (26) | 86.7 | (15) | 88.2 | (13) | 81.3 | 90.4 |
| 90-99% | (10) | 34.5 | (5) | 29.4 | (9) | 47.4 | (11) | 44.0 | (7) | 43.8 | 36.1 | (6) | 18.2 | (4) | 13.3 | (2) | 11.1 | (6) | 35.3 | (5) | 18.5 | 16.9 | | | | (4) | 13.3 | (2) | 11.8 | (2) | 12.5 | 8.8 | |
| 80-89% | (2) | 6.9 | (1) | 5.9 | (3) | 15.8 | (2) | 8.0 | (1) | 6.3 | 5.2 | | | | | | | | | | | 0.8 | | | | | | | (1) | 6.3 | 0.3 | | |
| 51-79% | (2) | 6.9 | | | (1) | 5.3 | (2) | 8.0 | | | 3.6 | | | | | | (1) | 5.9 | | | | 0.4 | | | | | | | | | 0.1 | | |
| 50% or below | (8) | 27.6 | (2) | 11.8 | | | (4) | 16.0 | | | 9.8 | | | | | | (1) | 5.9 | (1) | 3.7 | | 1.0 | | | | | | | | | 0.4 | | |
| Total | (29) | 100.0 | (17) | 100.0 | (19) | 100.0 | (25) | 100.0 | (16) | 100.0 | 100.0 | (33) | 100.0 | (30) | 100.0 | (18) | 100.0 | (17) | 100.0 | (27) | 100.0 | 100.0 | (29) | 100.0 | (28) | 100.0 | (30) | 100.0 | (17) | 100.0 | (16) | 100.0 | 100.0 |
| Subtotal 90-100% | (17) | 58.6 | (14) | 82.4 | (15) | 78.9 | (17) | 68.0 | (15) | 93.8 | 81.3 | (33) | 100.0 | (30) | 100.0 | (18) | 100.0 | (15) | 88.2 | (26) | 96.3 | 97.9 | (29) | 100.0 | (28) | 100.0 | (30) | 100.0 | (17) | 100.0 | (15) | 93.8 | 99.2 |
| Level 15 | | | | | | | | | | | | | | | | | | | | | | | | | | | | | | | | | |
| 100% | | | | | | | | | | | 37.1 | (4) | 12.1 | (9) | 30.0 | (9) | 50.0 | (3) | 17.6 | (7) | 25.9 | | (18) | 62.1 | (20) | 71.4 | (16) | 53.3 | (12) | 70.6 | (4) | 25.0 | 62.9 |
| 90-99% | | | | | | | | | | | 49.2 | (23) | 69.7 | (13) | 43.3 | (6) | 33.3 | (8) | 47.1 | (12) | 44.4 | | (10) | 34.5 | (8) | 28.6 | (10) | 33.3 | (5) | 29.4 | (9) | 56.3 | 33.2 |
| 80-89% | | | | | | | | | | | 6.3 | (6) | 18.2 | (6) | 20.0 | (2) | 11.1 | (3) | 17.6 | (1) | 3.7 | | (1) | 3.4 | | | (4) | 13.3 | | (1) | 6.3 | 1.8 | |
| 51-79% | | | | | | | | | | | 3.0 | | | (2) | 6.7 | (1) | 5.6 | | | (3) | 11.1 | | | | | | | | | | | 0.8 | |
| 50% or below | | | | | | | | | | | 4.3 | | | | | | | (3) | 17.6 | (4) | 14.8 | | | | | | | | | (2) | 12.5 | 1.4 | |
| Total | | | | | | | | | | | 100.0 | (33) | 100.0 | (30) | 100.0 | (18) | 100.0 | (17) | 100.0 | (27) | 100.0 | 100.0 | (29) | 100.0 | (28) | 100.0 | (30) | 100.0 | (17) | 100.0 | (16) | 100.0 | 100.0 |
| Subtotal 90-100% | | | | | | | | | | | 86.4 | (27) | 81.8 | (22) | 73.3 | (15) | 83.3 | (11) | 64.7 | (19) | 70.4 | 86.4 | (28) | 96.6 | (28) | 100.0 | (26) | 86.7 | (17) | 100.0 | (13) | 81.3 | 96.1 |
| Level 20 | | | | | | | | | | | | | | | | | | | | | | | | | | | | | | | | | |
| 100% | | | | | | | | | | | | | | | | | | | | | | | (12) | 41.4 | (19) | 67.9 | (20) | 66.7 | (6) | 35.3 | (3) | 18.8 | 47.4 |
| 90-99% | | | | | | | | | | | | | | | | | | | | | | | (16) | 55.2 | (9) | 32.1 | (7) | 23.3 | (10) | 58.8 | (10) | 62.5 | 47.1 |
| 80-89% | | | | | | | | | | | | | | | | | | | | | | | (1) | 3.4 | | | (2) | 6.7 | (1) | 5.9 | (1) | 6.3 | 2.4 |
| 51-79% | | | | | | | | | | | | | | | | | | | | | | | | | | | (1) | 3.3 | | | | 0.9 | |
| 50% or below | | | | | | | | | | | | | | | | | | | | | | | | | | | | | | (2) | 12.5 | 2.2 | |
| Total | | | | | | | | | | | | | | | | | | | | | | | (29) | 100.0 | (28) | 100.0 | (30) | 100.0 | (17) | 100.0 | (16) | 100.0 | 100.0 |
| Subtotal 90-100% | | | | | | | | | | | | (28) | 96.6 | (28) | 100.0 | (27) | 90.0 | (16) | 94.1 | (13) | 81.3 | 94.5 | (28) | 96.6 | (28) | 100.0 | (27) | 90.0 | (16) | 94.1 | (13) | 81.3 | 94.5 |

| | 2004 | 2005 | 2006 | 2007 | 2008 | 2004 | 2005 | 2006 | 2007 | 2008 | 2004 | 2005 | 2006 | 2007 | 2008 |
|--|------|------|------|------|------|------|------|------|------|------|------|------|------|------|------|
| No. of students DNC ¹ : | 0 | 0 | 0 | 2 | 0 | 0 | 0 | 0 | 1 | 1 | 0 | 0 | 0 | 0 | 0 |
| No. of students at risk ² : | 2 | 1 | 2 | 4 | 0 | 0 | 0 | 0 | 2 | 1 | 1 | 0 | 4 | 0 | 3 |

Notes:

¹ Students can be DNC (deemed not capable) only if they meet one of the conditions (insufficient English, receiving D&I funding, insufficient attendance at the school or referred from Reading Recovery) AND read below the minimum standard.

² The number of students at risk is the number of students reading at less than 90% accuracy at Level 1 for Prep, Level 5 for Year 1 or Level 15 for Year 2.

Assessment of Reading: Prep to Year 2

School no: 3659

School name: Spotswood Primary School

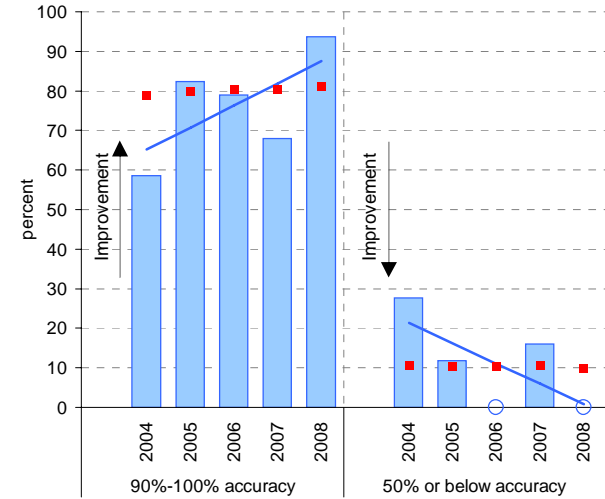
Explanation: Students' ability to read unsighted text is assessed at the end of each year.

Source of data: Data transmitted from school to DEECD via an online web-form.

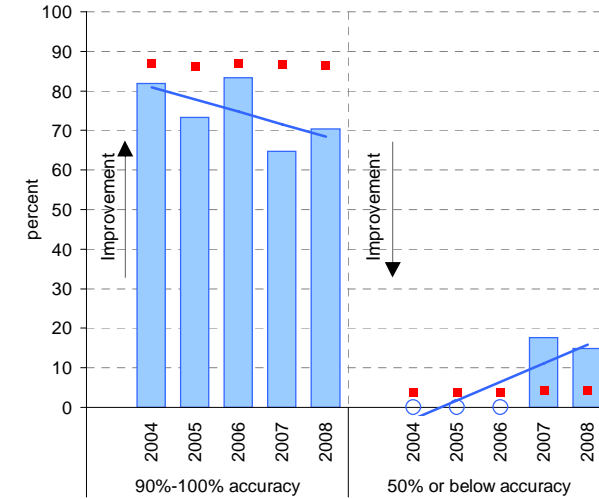
Notes: * The school trendline is being trialled. It is only plotted when there is data for each calendar year.

^ This data is highly skewed, with a lot of schools obtaining the best possible result, particularly in Year 2. The maximum achievable percentile is therefore significantly less than 100.

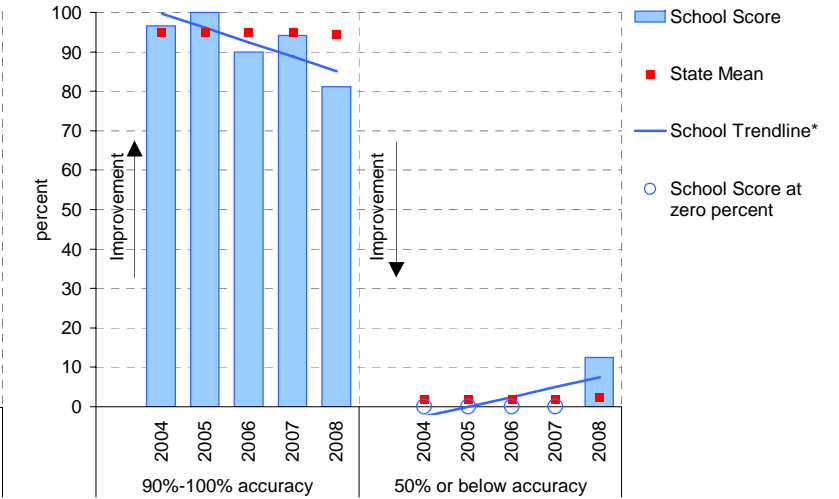
Year level: Prep
Text level: Level 5



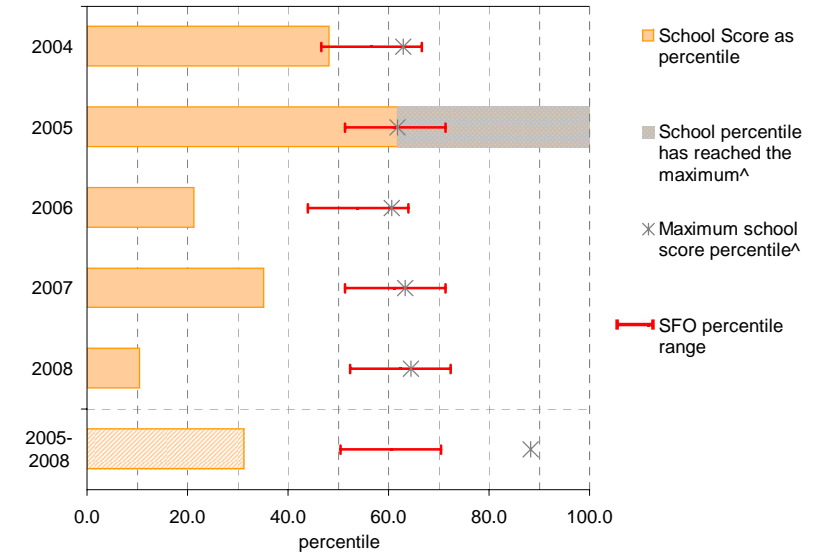
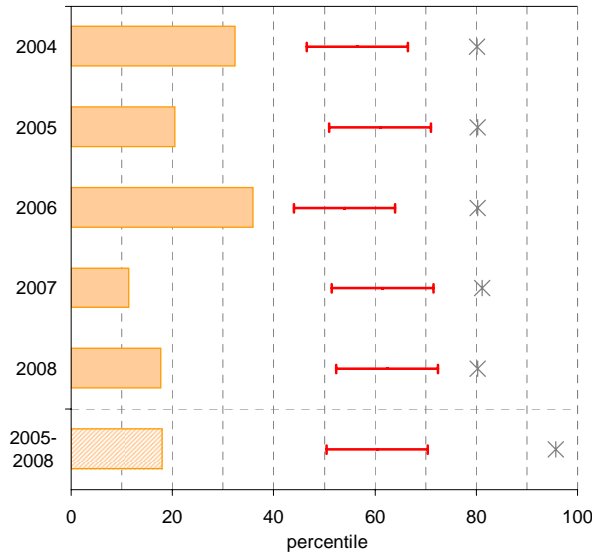
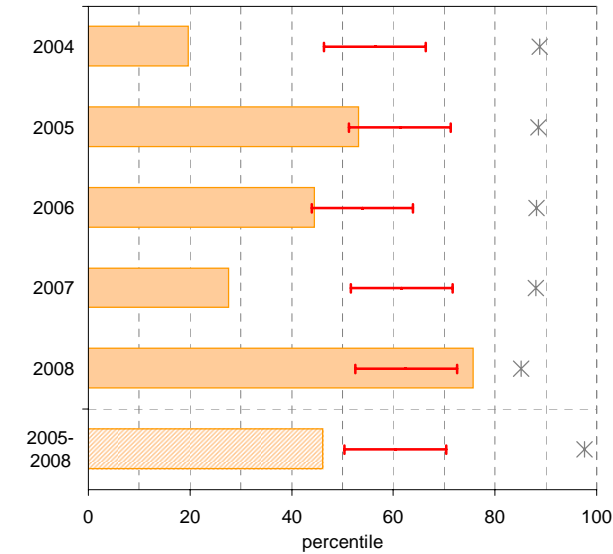
Year level: Year 1
Text level: Level 15



Year level: Year 2
Text level: Level 20



90%-100% accuracy as percentile against SFO percentile range



Teacher Judgments against the VELS - Year levels Prep-6 combined

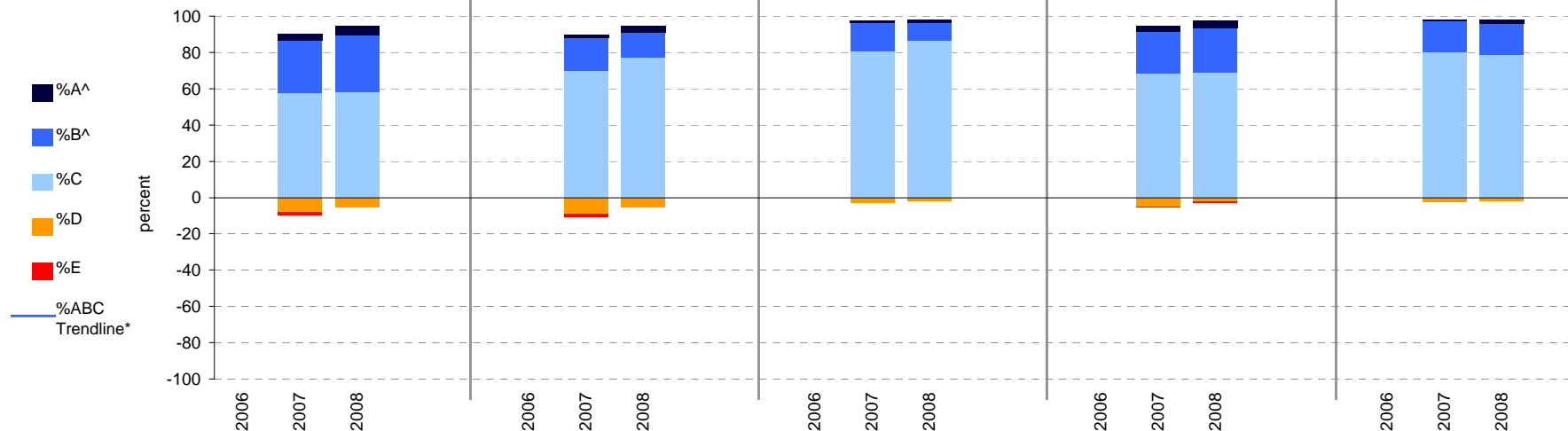
School no: 3659

School name: Spotswood Primary School

Source of data: Data retrieved electronically from CASES21.

Explanation: Teacher judgments of student achievement against the VELS.

| Year Levels: | Reading | | | | | | Writing | | | | | Speaking & Listening | | | | | Number | | | | | Measurement, Chance & Data | | | | | | | | | |
|-------------------|----------------|------|------|-----|-----|-----|----------------|------|------|-----|-----|----------------------|----------------|------|------|-----|--------|-----|----------------|------|------|----------------------------|-----|-----|----------------|------|------|-----|-----|-----|---|
| | total students | % A^ | % B^ | % C | % D | % E | total students | % A^ | % B^ | % C | % D | % E | total students | % A^ | % B^ | % C | % D | % E | total students | % A^ | % B^ | % C | % D | % E | total students | % A^ | % B^ | % C | % D | % E | |
| Prep-6 (combined) | 2006 | | | | | | | | | | | | | | | | | | | | | | | | | | | | | | |
| | 2007 | 178 | 4 | 29 | 57 | 8 | 2 | 178 | 1 | 19 | 70 | 9 | 2 | 178 | 1 | 16 | 81 | 3 | 0 | 178 | 3 | 23 | 69 | 5 | 1 | 178 | 1 | 17 | 80 | 2 | 0 |
| | 2008 | 149 | 5 | 31 | 58 | 5 | 0 | 149 | 3 | 14 | 77 | 5 | 0 | 149 | 1 | 10 | 87 | 2 | 0 | 150 | 4 | 25 | 69 | 2 | 1 | 148 | 2 | 18 | 78 | 2 | 0 |



Notes: * The school trendline is only plotted when there is data for each calendar year.
 ^ The cutoff between grades A and B changed in 2007. Further information is available on the following website:
<http://www.education.vic.gov.au/studentlearning/studentreports/schools/whatsnew.htm>.

Teacher Judgments against the VELS - English (primary)

School no: 3659

School name: Spotswood Primary School

Source of data: Data retrieved electronically from CASES21.

Explanation: Teacher judgments of student achievement against the VELS.

Notes: * The school trendline is only plotted when there is data for each calendar year.

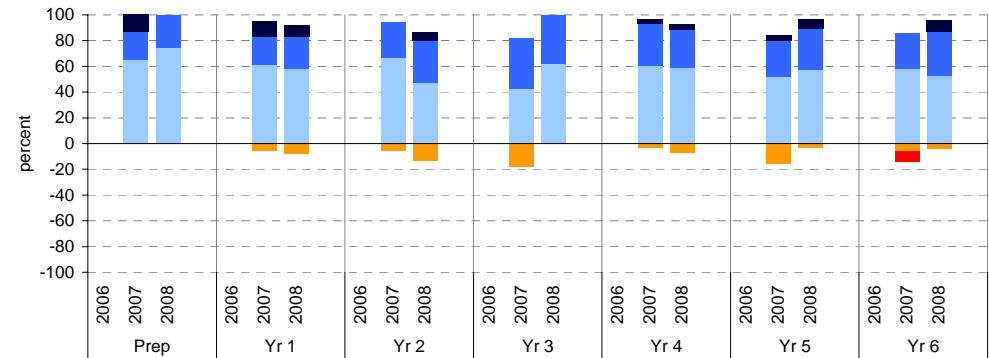
** In 2006, approx. 850 schools assessed their students against the 0.25 VELS scale. 2006 benchmarks are therefore based on a subset of schools.

^ The cutoff between grades A and B changed in 2007. Further information is available on the following website: <http://www.education.vic.gov.au/studentlearning/studentreports/schools/whatsnew.htm>.

^^ 2008 benchmarks and percentiles will be calculated in August, when data from all schools has been submitted.

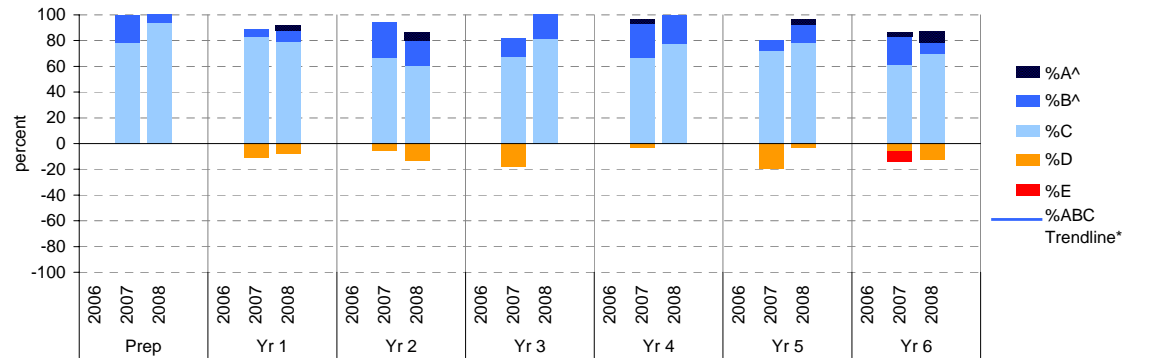
Reading

| | total students | | % of students by grade | | | | | Mean Score | | | total students | | % of students by grade | | | | | Mean Score | |
|------|----------------|------|------------------------|----|----|----|---|------------|---------|------|----------------|------|------------------------|----|----|----|---|------------|---------|
| | 2006 | 2007 | A^ | B^ | C | D | E | School | State** | | 2006 | 2007 | A^ | B^ | C | D | E | School | State** |
| Prep | 2006 | | | | | | | 1.01 | 1.01 | Yr 4 | 2006 | | | | | | | 2.96 | 2.96 |
| | 2007 | 23 | 13 | 22 | 65 | 0 | 0 | 1.01 | 1.01 | | 2007 | 30 | 3 | 33 | 60 | 3 | 0 | 3.03 | 2.97 |
| | 2008 | 16 | 0 | 25 | 75 | 0 | 0 | 0.97 | | | 2008 | 27 | 4 | 30 | 59 | 7 | 0 | 3.06 | |
| Yr 1 | 2006 | | | | | | | 1.57 | 1.57 | Yr 5 | 2006 | | | | | | | 3.44 | 3.44 |
| | 2007 | 18 | 11 | 22 | 61 | 6 | 0 | 1.53 | 1.57 | | 2007 | 25 | 4 | 28 | 52 | 16 | 0 | 3.49 | 3.45 |
| | 2008 | 24 | 8 | 25 | 58 | 8 | 0 | 1.53 | | | 2008 | 28 | 7 | 32 | 57 | 4 | 0 | 3.56 | |
| Yr 2 | 2006 | | | | | | | 2.04 | 2.04 | Yr 6 | 2006 | | | | | | | 3.94 | 3.94 |
| | 2007 | 18 | 0 | 28 | 67 | 6 | 0 | 2.03 | 2.06 | | 2007 | 36 | 0 | 28 | 58 | 6 | 8 | 3.92 | 3.95 |
| | 2008 | 15 | 7 | 33 | 47 | 13 | 0 | 2.02 | | | 2008 | 23 | 9 | 35 | 52 | 4 | 0 | 4.04 | |
| Yr 3 | 2006 | | | | | | | 2.49 | 2.49 | | | | | | | | | | |
| | 2007 | 28 | 0 | 39 | 43 | 18 | 0 | 2.46 | 2.50 | | | | | | | | | | |
| | 2008 | 16 | 0 | 38 | 63 | 0 | 0 | 2.56 | | | | | | | | | | | |



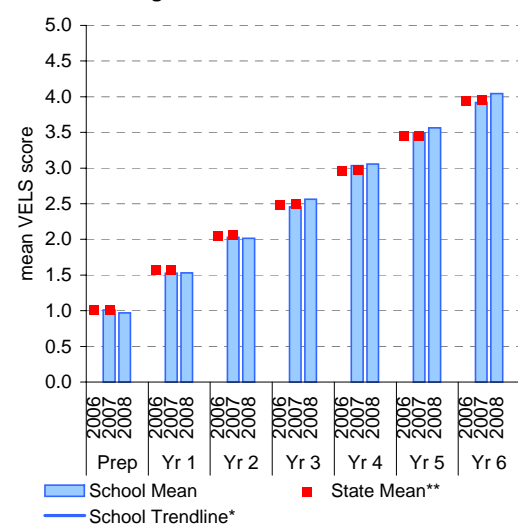
Writing

| | total students | | % of students by grade | | | | | Mean Score | | | total students | | % of students by grade | | | | | Mean Score | |
|------|----------------|------|------------------------|----|----|----|---|------------|---------|------|----------------|------|------------------------|----|----|----|---|------------|---------|
| | 2006 | 2007 | A^ | B^ | C | D | E | School | State** | | 2006 | 2007 | A^ | B^ | C | D | E | School | State** |
| Prep | 2006 | | | | | | | 0.97 | 0.97 | Yr 4 | 2006 | | | | | | | 2.89 | 2.89 |
| | 2007 | 23 | 0 | 22 | 78 | 0 | 0 | 0.97 | 0.97 | | 2007 | 30 | 3 | 27 | 67 | 3 | 0 | 3.04 | 2.91 |
| | 2008 | 16 | 0 | 6 | 94 | 0 | 0 | 0.98 | | | 2008 | 27 | 0 | 22 | 78 | 0 | 0 | 3.02 | 3.02 |
| Yr 1 | 2006 | | | | | | | 1.47 | 1.47 | Yr 5 | 2006 | | | | | | | 3.38 | 3.38 |
| | 2007 | 18 | 0 | 6 | 83 | 11 | 0 | 1.39 | 1.49 | | 2007 | 25 | 0 | 8 | 72 | 20 | 0 | 3.38 | 3.39 |
| | 2008 | 24 | 4 | 8 | 79 | 8 | 0 | 1.48 | | | 2008 | 28 | 4 | 14 | 79 | 4 | 0 | 3.49 | 3.49 |
| Yr 2 | 2006 | | | | | | | 1.95 | 1.95 | Yr 6 | 2006 | | | | | | | 3.88 | 3.88 |
| | 2007 | 18 | 0 | 28 | 67 | 6 | 0 | 1.99 | 1.96 | | 2007 | 36 | 3 | 22 | 61 | 6 | 8 | 3.88 | 3.89 |
| | 2008 | 15 | 7 | 20 | 60 | 13 | 0 | 1.97 | | | 2008 | 23 | 9 | 9 | 70 | 13 | 0 | 3.95 | 3.95 |
| Yr 3 | 2006 | | | | | | | 2.42 | 2.42 | | | | | | | | | | |
| | 2007 | 28 | 0 | 14 | 68 | 18 | 0 | 2.40 | 2.43 | | | | | | | | | | |
| | 2008 | 16 | 0 | 19 | 81 | 0 | 0 | 2.47 | | | | | | | | | | | |

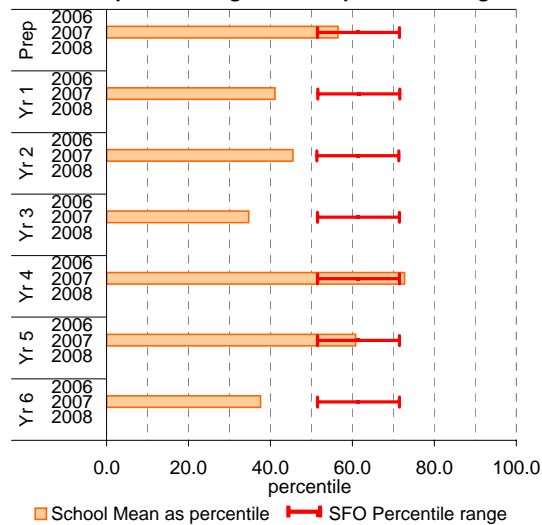


Reading

School Mean against State Mean^^

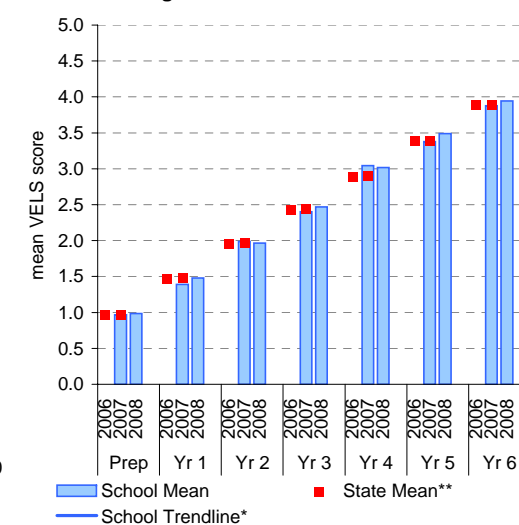


School Mean as percentile against SFO percentile range^^

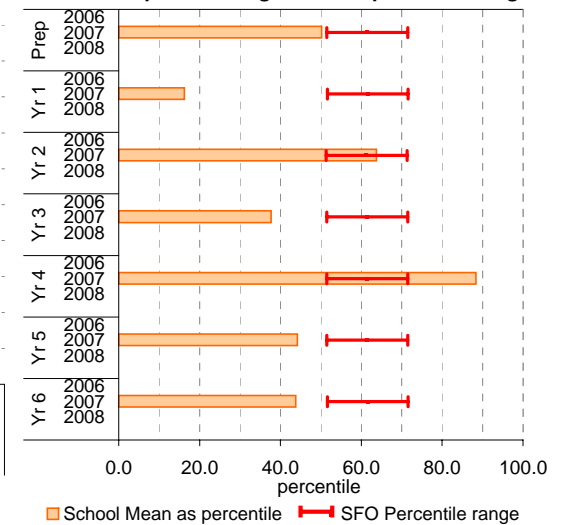


Writing

School Mean against State Mean^^



School Mean as percentile against SFO percentile range^^



Teacher Judgments against the VELS - English (primary)

School no: 3659

School name: Spotswood Primary School

Source of data: Data retrieved electronically from CASES21.

Explanation: Teacher judgments of student achievement against the VELS.

Notes: * The school trendline is only plotted when there is data for each calendar year.

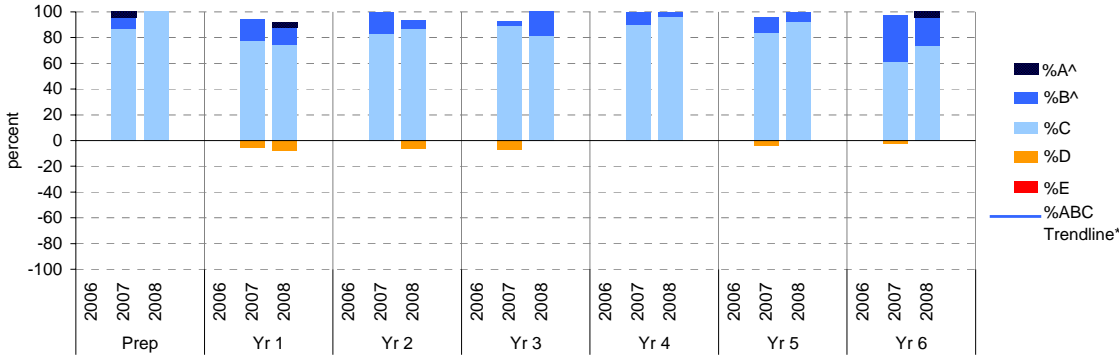
** In 2006, approx. 850 schools assessed their students against the 0.25 VELS scale. 2006 benchmarks are therefore based on a subset of schools.

^ The cutoff between grades A and B changed in 2007. Further information is available on the following website: <http://www.education.vic.gov.au/studentlearning/studentreports/schools/whatsnew.htm>.

^^ 2008 benchmarks and percentiles will be calculated in August, when data from all schools has been submitted.

Speaking and Listening

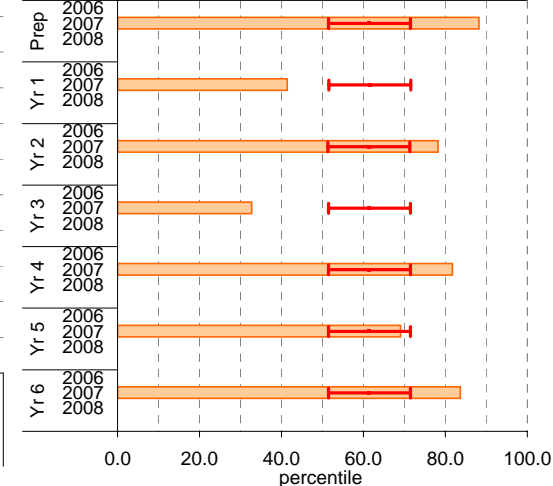
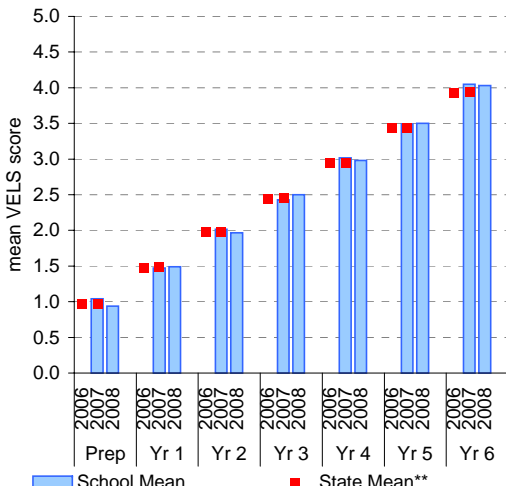
| | total students | % of students by grade | | | | | Mean Score | | | total students | % of students by grade | | | | | Mean Score | |
|------|----------------|------------------------|----|----|-----|---|------------|---------|------|----------------|------------------------|----|----|---|------|------------|---------|
| | | A^ | B^ | C | D | E | School | State** | | | A^ | B^ | C | D | E | School | State** |
| Prep | 2006 | | | | | | 0.97 | | 2006 | | | | | | 2.94 | | |
| | 2007 | 23 | 4 | 9 | 87 | 0 | 1.04 | 0.97 | 2007 | 30 | 0 | 10 | 90 | 0 | 3.02 | 2.94 | |
| | 2008 | 16 | 0 | 0 | 100 | 0 | 0.94 | | 2008 | 27 | 0 | 4 | 96 | 0 | 2.98 | | |
| Yr 1 | 2006 | | | | | | 1.48 | | 2006 | | | | | | 3.43 | | |
| | 2007 | 18 | 0 | 17 | 78 | 6 | 1.47 | 1.48 | 2007 | 25 | 0 | 12 | 84 | 4 | 3.49 | 3.43 | |
| | 2008 | 24 | 4 | 13 | 75 | 8 | 1.49 | | 2008 | 28 | 0 | 7 | 93 | 0 | 3.50 | | |
| Yr 2 | 2006 | | | | | | 1.98 | | 2006 | | | | | | 3.93 | | |
| | 2007 | 18 | 0 | 17 | 83 | 0 | 2.01 | 1.98 | 2007 | 36 | 0 | 36 | 61 | 3 | 4.05 | 3.94 | |
| | 2008 | 15 | 0 | 7 | 87 | 7 | 1.97 | | 2008 | 23 | 4 | 22 | 74 | 0 | 4.03 | | |
| Yr 3 | 2006 | | | | | | 2.45 | | 2006 | | | | | | 3.93 | | |
| | 2007 | 28 | 0 | 4 | 89 | 7 | 2.43 | 2.46 | 2007 | 36 | 0 | 36 | 61 | 3 | 4.05 | 3.94 | |
| | 2008 | 16 | 0 | 19 | 81 | 0 | 2.50 | | 2008 | 23 | 4 | 22 | 74 | 0 | 4.03 | | |



Speaking and Listening

School Mean against State Mean^^

School Mean as percentile against SFO percentile range^^



Legend: School Mean (blue bar), State Mean** (red square)

Legend: School Mean as percentile (orange bar), SFO Percentile range (red error bar)

Teacher Judgments against the VELS - Mathematics (primary)

School no: 3659

School name: Spotswood Primary School

Source of data: Data retrieved electronically from CASES21.

Explanation: Teacher judgments of student achievement against the VELS.

Notes: * The school trendline is only plotted when there is data for each calendar year.

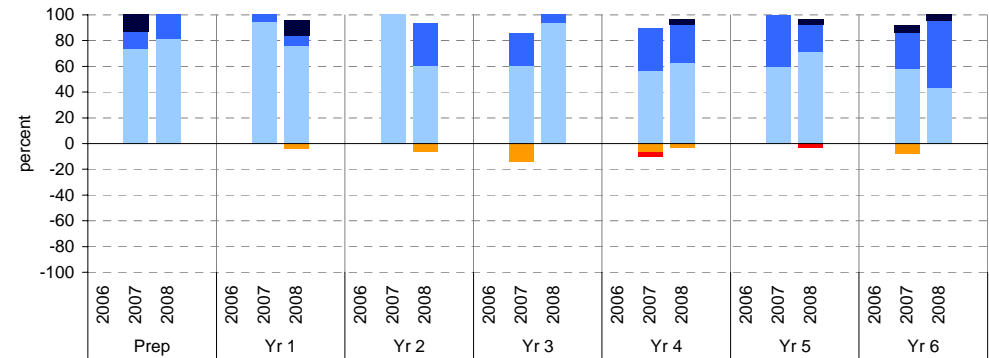
** In 2006, approx. 850 schools assessed their students against the 0.25 VELS scale. 2006 benchmarks are therefore based on a subset of schools.

^ The cutoff between grades A and B changed in 2007. Further information is available on the following website: <http://www.education.vic.gov.au/studentlearning/studentreports/schools/whatsnew.htm>.

^^ 2008 benchmarks and percentiles will be calculated in August, when data from all schools has been submitted.

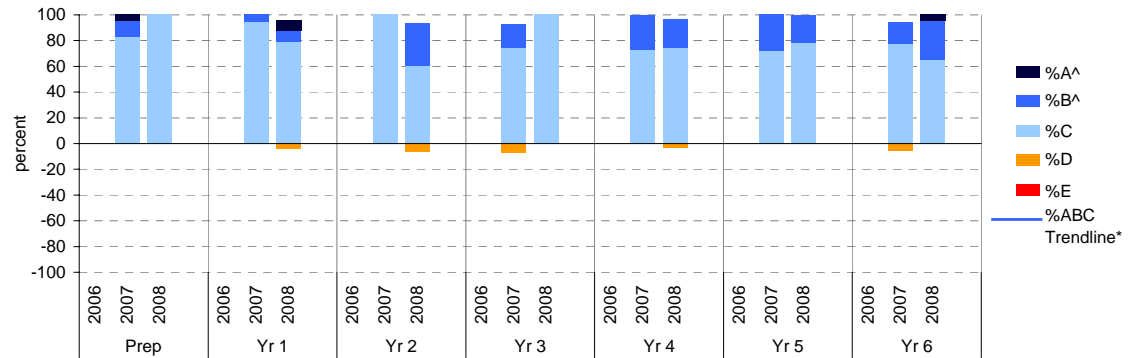
Number

| | total students | | % of students by grade | | | | | Mean Score | | | total students | | % of students by grade | | | | | Mean Score | |
|------|----------------|------|------------------------|----|-----|----|---|------------|---------|------|----------------|------|------------------------|----|----|---|---|------------|---------|
| | 2006 | 2007 | A^ | B^ | C | D | E | School | State** | | 2006 | 2007 | A^ | B^ | C | D | E | School | State** |
| Prep | 2006 | | | | | | | 1.00 | 1.00 | Yr 4 | 2006 | | | | | | | 2.95 | 2.95 |
| | 2007 | 23 | 13 | 13 | 74 | 0 | 0 | 1.08 | 1.00 | | 2007 | 30 | 0 | 33 | 57 | 7 | 3 | 2.99 | 2.96 |
| | 2008 | 16 | 0 | 19 | 81 | 0 | 0 | 1.02 | | | 2008 | 27 | 4 | 30 | 63 | 4 | 0 | 3.05 | |
| Yr 1 | 2006 | | | | | | | 1.51 | 1.51 | Yr 5 | 2006 | | | | | | | 3.43 | 3.43 |
| | 2007 | 18 | 0 | 6 | 94 | 0 | 0 | 1.44 | 1.51 | | 2007 | 25 | 0 | 40 | 60 | 0 | 0 | 3.54 | 3.44 |
| | 2008 | 25 | 12 | 8 | 76 | 4 | 0 | 1.54 | | | 2008 | 28 | 4 | 21 | 71 | 0 | 4 | 3.50 | |
| Yr 2 | 2006 | | | | | | | 1.99 | 1.99 | Yr 6 | 2006 | | | | | | | 3.93 | 3.93 |
| | 2007 | 18 | 0 | 0 | 100 | 0 | 0 | 1.94 | 1.99 | | 2007 | 36 | 6 | 28 | 58 | 8 | 0 | 4.01 | 3.95 |
| | 2008 | 15 | 0 | 33 | 60 | 7 | 0 | 2.00 | | | 2008 | 23 | 4 | 52 | 43 | 0 | 0 | 4.12 | |
| Yr 3 | 2006 | | | | | | | 2.46 | 2.46 | | | | | | | | | | |
| | 2007 | 28 | 0 | 25 | 61 | 14 | 0 | 2.45 | 2.48 | | | | | | | | | | |
| | 2008 | 16 | 0 | 6 | 94 | 0 | 0 | 2.50 | | | | | | | | | | | |



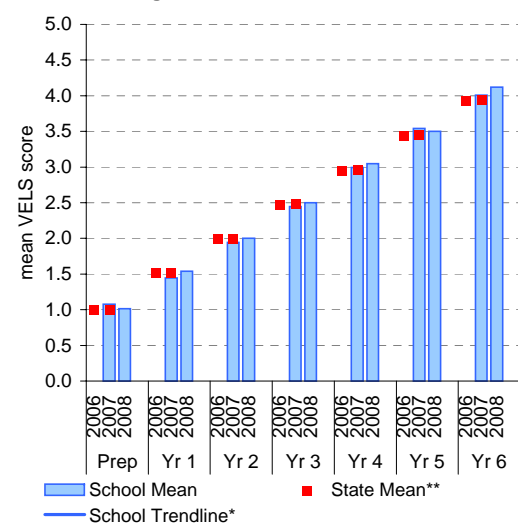
Measurement, Chance and Data

| | total students | | % of students by grade | | | | | Mean Score | | | total students | | % of students by grade | | | | | Mean Score | |
|------|----------------|------|------------------------|----|-----|---|---|------------|---------|------|----------------|------|------------------------|----|----|---|---|------------|---------|
| | 2006 | 2007 | A^ | B^ | C | D | E | School | State** | | 2006 | 2007 | A^ | B^ | C | D | E | School | State** |
| Prep | 2006 | | | | | | | 0.97 | 0.97 | Yr 4 | 2006 | | | | | | | 2.94 | 2.94 |
| | 2007 | 23 | 4 | 13 | 83 | 0 | 0 | 1.01 | 0.97 | | 2007 | 30 | 0 | 27 | 73 | 0 | 0 | 3.06 | 2.95 |
| | 2008 | 15 | 0 | 0 | 100 | 0 | 0 | 1.00 | | | 2008 | 27 | 0 | 22 | 74 | 4 | 0 | 3.02 | 3.02 |
| Yr 1 | 2006 | | | | | | | 1.48 | 1.48 | Yr 5 | 2006 | | | | | | | 3.42 | 3.42 |
| | 2007 | 18 | 0 | 6 | 94 | 0 | 0 | 1.44 | 1.49 | | 2007 | 25 | 0 | 28 | 72 | 0 | 0 | 3.52 | 3.43 |
| | 2008 | 24 | 8 | 8 | 79 | 4 | 0 | 1.52 | | | 2008 | 28 | 0 | 21 | 79 | 0 | 0 | 3.54 | |
| Yr 2 | 2006 | | | | | | | 1.97 | 1.97 | Yr 6 | 2006 | | | | | | | 3.92 | 3.92 |
| | 2007 | 18 | 0 | 0 | 100 | 0 | 0 | 2.00 | 1.98 | | 2007 | 36 | 0 | 17 | 78 | 6 | 0 | 3.97 | 3.93 |
| | 2008 | 15 | 0 | 33 | 60 | 7 | 0 | 1.98 | | | 2008 | 23 | 4 | 30 | 65 | 0 | 0 | 4.08 | |
| Yr 3 | 2006 | | | | | | | 2.45 | 2.45 | | | | | | | | | | |
| | 2007 | 28 | 0 | 18 | 75 | 7 | 0 | 2.46 | 2.46 | | | | | | | | | | |
| | 2008 | 16 | 0 | 0 | 100 | 0 | 0 | 2.48 | | | | | | | | | | | |

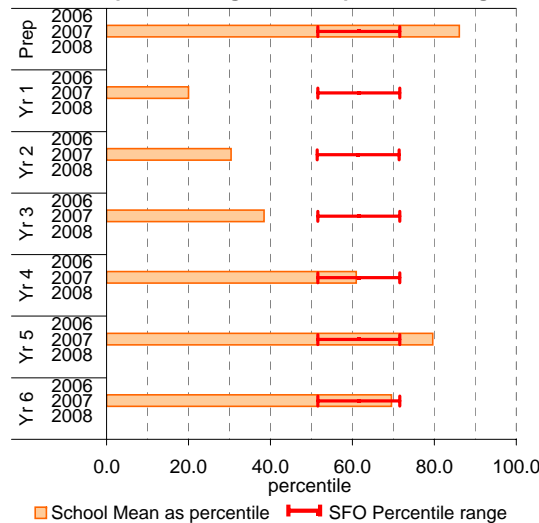


Number

School Mean against State Mean^^

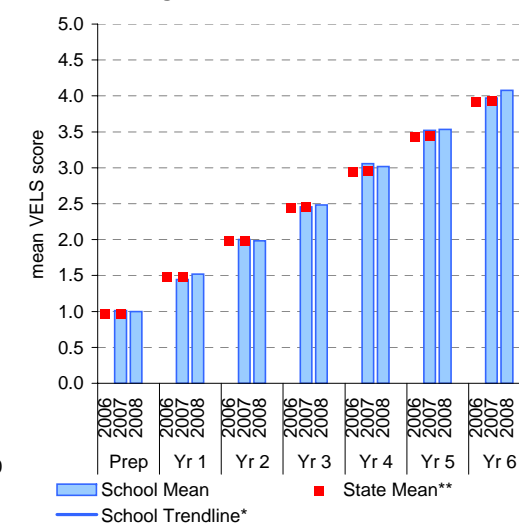


School Mean as percentile against SFO percentile range^^

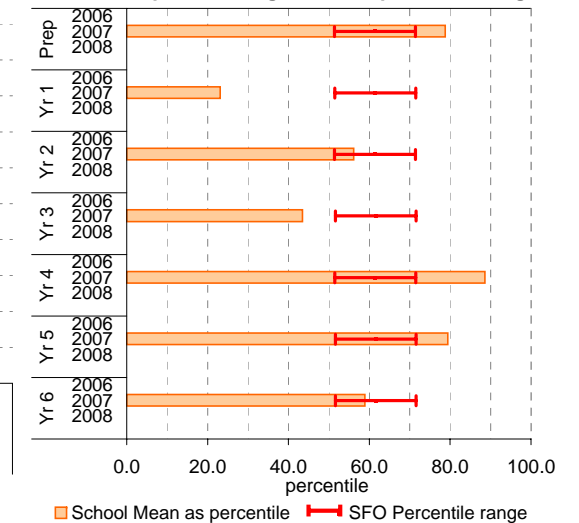


Measurement, Chance and Data

School Mean against State Mean^^



School Mean as percentile against SFO percentile range^^



Teacher Judgments against the VELS - English (primary)

School no: 3659
 School name: Spotswood Primary School
 Source of data: Data retrieved electronically from CASES21.
 Explanation: Teacher judgments of student achievement against the VELS.

Reading

| Year Level | Year | Total ¹ | Assessed ² | Level 1 | | | | Level 2 | | | | Level 3 | | | | Level 4 | | | | Level 5 | | | | Level 6 | | | | Level 6E | | | | School mean | State mean ³ | Difference between school and state mean ⁴ | | | | |
|------------|------|--------------------|-----------------------|---------|------|------|------|---------|------|------|------|---------|------|------|------|---------|------|------|------|---------|------|------|------|---------|------|------|------|----------|------|--|--|-------------|-------------------------|---|------|-------|-------|-------|
| | | | | 0.00 | 0.50 | 1.00 | 1.25 | 1.50 | 1.75 | 2.00 | 2.25 | 2.50 | 2.75 | 3.00 | 3.25 | 3.50 | 3.75 | 4.00 | 4.25 | 4.50 | 4.75 | 5.00 | 5.25 | 5.50 | 5.75 | 6.00 | 6.25 | 6.50 | 6.75 | | | | | | | | | |
| prep | 2008 | 16 | 16 | 3 | 9 | | 4 | | | | | | | | | | | | | | | | | | | | | | | | | | | 0.97 | | | | |
| prep | 2007 | 23 | 23 | 6 | 9 | | 5 | 2 | | 1 | | | | | | | | | | | | | | | | | | | | | | | | 1.01 | 1.01 | 0.00 | | |
| yr1 | 2008 | 24 | 24 | | 2 | | 3 | 11 | 6 | 2 | | | | | | | | | | | | | | | | | | | | | | | | 1.53 | | | | |
| prep | 2006 | | | | | | | | | | | | | | | | | | | | | | | | | | | | | | | | | | 1.01 | | | |
| yr1 | 2007 | 18 | 18 | | 1 | | 2 | 9 | 4 | 2 | | | | | | | | | | | | | | | | | | | | | | | | 1.53 | 1.57 | -0.04 | | |
| yr2 | 2008 | 15 | 15 | | | | 1 | 1 | 1 | 6 | 5 | 1 | | | | | | | | | | | | | | | | | | | | | | 2.02 | | | | |
| prep | 2005 | | | | | | | | | | | | | | | | | | | | | | | | | | | | | | | | | | | 1.57 | | |
| yr1 | 2006 | | | | | | | | | | | | | | | | | | | | | | | | | | | | | | | | | | | 2.03 | 2.06 | -0.03 |
| yr2 | 2007 | 18 | 18 | | | | 1 | 1 | 11 | 5 | | | | | | | | | | | | | | | | | | | | | | | | | 2.56 | | | |
| yr3 | 2008 | 16 | 16 | | | | | | | 2 | 8 | 6 | | | | | | | | | | | | | | | | | | | | | | | 2.56 | | | |
| yr1 | 2005 | | | | | | | | | | | | | | | | | | | | | | | | | | | | | | | | | | | 2.04 | | |
| yr2 | 2006 | | | | | | | | | | | | | | | | | | | | | | | | | | | | | | | | | | | 2.04 | | |
| yr3 | 2007 | 28 | 28 | | | | 1 | 4 | | 5 | 7 | 11 | | | | | | | | | | | | | | | | | | | | | | | 2.46 | 2.50 | -0.04 | |
| yr4 | 2008 | 27 | 27 | | | | | | | 2 | | 16 | 8 | 1 | | | | | | | | | | | | | | | | | | | | | 3.06 | | | |
| yr2 | 2005 | | | | | | | | | | | | | | | | | | | | | | | | | | | | | | | | | | | 2.49 | | |
| yr3 | 2006 | | | | | | | | | | | | | | | | | | | | | | | | | | | | | | | | | | | 2.49 | | |
| yr4 | 2007 | 30 | 30 | | | | | | | 1 | 6 | 12 | 10 | 1 | | | | | | | | | | | | | | | | | | | | | 3.03 | 2.97 | 0.06 | |
| yr5 | 2008 | 28 | 28 | | | | | | | | 1 | | 4 | 12 | 9 | 2 | | | | | | | | | | | | | | | | | | | 3.56 | | | |
| yr3 | 2005 | | | | | | | | | | | | | | | | | | | | | | | | | | | | | | | | | | | 2.96 | | |
| yr4 | 2006 | | | | | | | | | | | | | | | | | | | | | | | | | | | | | | | | | | | 2.96 | | |
| yr5 | 2007 | 25 | 25 | | | | | | | | 4 | | 2 | 11 | 7 | 1 | | | | | | | | | | | | | | | | | | | 3.49 | 3.45 | 0.04 | |
| yr6 | 2008 | 23 | 23 | | | | | | | | | | 1 | | 5 | 7 | 8 | 2 | | | | | | | | | | | | | | | | | 4.04 | | | |
| yr4 | 2005 | | | | | | | | | | | | | | | | | | | | | | | | | | | | | | | | | | | 3.44 | | |
| yr5 | 2006 | | | | | | | | | | | | | | | | | | | | | | | | | | | | | | | | | | | 3.44 | | |
| yr6 | 2007 | 36 | 36 | | | | | | | 1 | 1 | 1 | | 2 | 3 | 18 | 10 | | | | | | | | | | | | | | | | | | 3.92 | 3.95 | -0.03 | |
| yr5 | 2005 | | | | | | | | | | | | | | | | | | | | | | | | | | | | | | | | | | | 3.94 | | |
| yr6 | 2006 | | | | | | | | | | | | | | | | | | | | | | | | | | | | | | | | | | | 3.94 | | |
| yr6 | 2005 | | | | | | | | | | | | | | | | | | | | | | | | | | | | | | | | | | | | | |

shading indicates a 'C' grade (at the expected standard) on the VELS scale.

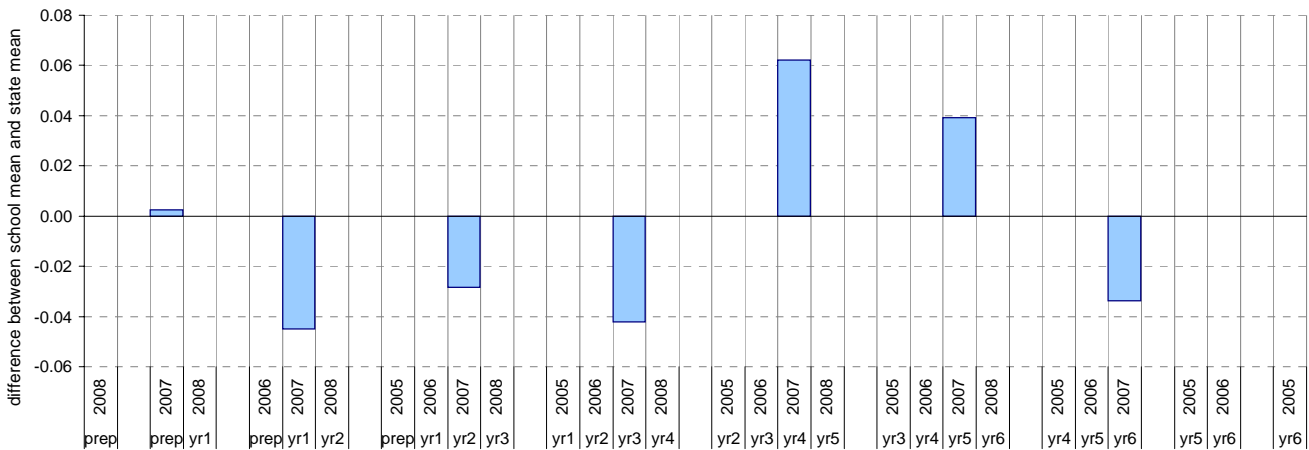
¹ The total number of students eligible to be assessed. This figure will typically match, or be very close to, the Year Level enrolment.

² The number of students assessed against the VELS. The difference between this figure and the total (1) should be accounted for by students assessed against Individual Learning Plans and/or the ESL companion in the case of English.

* In 2006, approx. 850 schools assessed their students against the 0.25 VELS scale. 2006 benchmarks are therefore based on a subset of schools.

⁴ 2008 benchmarks will be calculated in August, when data from all schools has been submitted.

Difference between school mean and state mean⁴, by cohort group



Teacher Judgments against the VELS - English (primary)

School no: 3659
 School name: Spotswood Primary School
 Source of data: Data retrieved electronically from CASES21.
 Explanation: Teacher judgments of student achievement against the VELS.

Speaking and Listening

| Year Level | Year | Total ¹ | Assessed ² | Level 1 | | | Level 2 | | | | Level 3 | | | | Level 4 | | | | Level 5 | | | | Level 6 | | | | Level 6E | | | School mean | State mean ³ | Difference between school and state mean ⁴ | | | | |
|------------|------|--------------------|-----------------------|---------|------|------|---------|------|------|------|---------|------|------|------|---------|------|------|------|---------|------|------|------|---------|------|------|------|----------|------|------|-------------|-------------------------|---|------|------|-------|------|
| | | | | 0.00 | 0.50 | 1.00 | 1.25 | 1.50 | 1.75 | 2.00 | 2.25 | 2.50 | 2.75 | 3.00 | 3.25 | 3.50 | 3.75 | 4.00 | 4.25 | 4.50 | 4.75 | 5.00 | 5.25 | 5.50 | 5.75 | 6.00 | 6.25 | 6.50 | 6.75 | | | | | | | |
| prep | 2008 | 16 | 16 | 2 | 14 | | | | | | | | | | | | | | | | | | | | | | | | | 0.94 | | | | | | |
| prep | 2007 | 23 | 23 | 1 | 19 | 2 | | | 1 | | | | | | | | | | | | | | | | | | | | 1.04 | 0.97 | 0.08 | | | | | |
| yr1 | 2008 | 24 | 24 | 2 | 2 | 16 | 3 | 1 | | | | | | | | | | | | | | | | | | | | | 1.49 | | | | | | | |
| prep | 2006 | | | | | | | | | | | | | | | | | | | | | | | | | | | | | | 0.97 | | | | | |
| yr1 | 2007 | 18 | 18 | 1 | 3 | 11 | 3 | | | | | | | | | | | | | | | | | | | | | | 1.47 | 1.48 | -0.01 | | | | | |
| yr2 | 2008 | 15 | 15 | | | 1 | 1 | 12 | 1 | | | | | | | | | | | | | | | | | | | | 1.97 | | | | | | | |
| prep | 2005 | | | | | | | | | | | | | | | | | | | | | | | | | | | | | | | 1.48 | | | | |
| yr1 | 2006 | | | | | | | | | | | | | | | | | | | | | | | | | | | | | | | 2.01 | 1.98 | 0.04 | | |
| yr2 | 2007 | 18 | 18 | | | 2 | 13 | 3 | | | | | | | | | | | | | | | | | | | | | | 2.50 | | | | | | |
| yr3 | 2008 | 16 | 16 | | | | | 3 | 10 | 3 | | | | | | | | | | | | | | | | | | | | | | 2.50 | | | | |
| yr1 | 2005 | | | | | | | | | | | | | | | | | | | | | | | | | | | | | | | | 1.98 | | | |
| yr2 | 2006 | | | | | | | | | | | | | | | | | | | | | | | | | | | | | | | | 2.43 | 2.46 | -0.03 | |
| yr3 | 2007 | 28 | 28 | | | 1 | 1 | 4 | 21 | 1 | | | | | | | | | | | | | | | | | | | | | | 2.98 | | | | |
| yr4 | 2008 | 27 | 27 | | | | | 3 | 23 | 1 | | | | | | | | | | | | | | | | | | | | | | | 2.98 | | | |
| yr2 | 2005 | | | | | | | | | | | | | | | | | | | | | | | | | | | | | | | | | 2.45 | | |
| yr3 | 2006 | | | | | | | | | | | | | | | | | | | | | | | | | | | | | | | | | 3.02 | 2.94 | 0.07 |
| yr4 | 2007 | 30 | 30 | | | | | 1 | 26 | 3 | | | | | | | | | | | | | | | | | | | | | | | 3.50 | | | |
| yr5 | 2008 | 28 | 28 | | | | | | | 2 | 24 | 2 | | | | | | | | | | | | | | | | | | | | | | 3.50 | | |
| yr3 | 2005 | | | | | | | | | | | | | | | | | | | | | | | | | | | | | | | | | 2.94 | | |
| yr4 | 2006 | | | | | | | | | | | | | | | | | | | | | | | | | | | | | | | | | 3.49 | 3.43 | 0.06 |
| yr5 | 2007 | 25 | 25 | | | | | 1 | 2 | 19 | 3 | | | | | | | | | | | | | | | | | | | | | | 4.03 | | | |
| yr6 | 2008 | 23 | 23 | | | | | | | 4 | 13 | 5 | 1 | | | | | | | | | | | | | | | | | | | | | 4.03 | | |
| yr4 | 2005 | | | | | | | | | | | | | | | | | | | | | | | | | | | | | | | | | | 3.43 | |
| yr5 | 2006 | | | | | | | | | | | | | | | | | | | | | | | | | | | | | | | | | 4.05 | 3.94 | 0.11 |
| yr6 | 2007 | 36 | 36 | | | | | | | 1 | 4 | 18 | 13 | | | | | | | | | | | | | | | | | | | | | 4.05 | 3.94 | 0.11 |
| yr5 | 2005 | | | | | | | | | | | | | | | | | | | | | | | | | | | | | | | | | | 3.93 | |
| yr6 | 2006 | | | | | | | | | | | | | | | | | | | | | | | | | | | | | | | | | 3.93 | | |
| yr6 | 2005 | | | | | | | | | | | | | | | | | | | | | | | | | | | | | | | | | | | |

shading indicates a 'C' grade (at the expected standard) on the VELS scale.

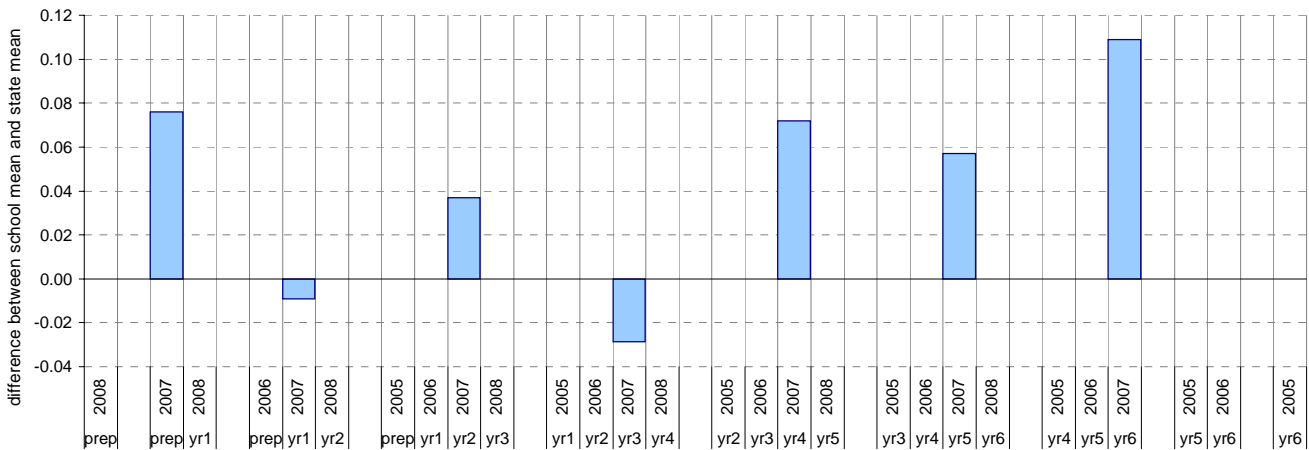
¹ The total number of students eligible to be assessed. This figure will typically match, or be very close to, the Year Level enrolment.

² The number of students assessed against the VELS. The difference between this figure and the total (1) should be accounted for by students assessed against Individual Learning Plans and/or the ESL companion in the case of English.

* In 2006, approx. 850 schools assessed their students against the 0.25 VELS scale. 2006 benchmarks are therefore based on a subset of schools.

⁴ 2008 benchmarks will be calculated in August, when data from all schools has been submitted.

Difference between school mean and state mean⁴, by cohort group



NAPLAN Year 3 and 5: Reading

School no: 3659

School name: Spotswood Primary School

Source of data: Victorian Curriculum and Assessment Authority.

Explanation: The National Assessment Program - Literacy and Numeracy (NAPLAN) is conducted each year for students in Years 3, 5, 7 and 9. For more detailed NAPLAN data, refer to the NAPLAN Data Service website at <http://naplands.vcaa.vic.edu.au>. A reference guide for analysing NAPLAN data is available at <http://www.vcaa.vic.edu.au/vcaa/prep10/naplan/schools/analysingnaplandata.pdf>.

Notes: * % student participation = (students who participated in NAPLAN / February enrolments) * 100

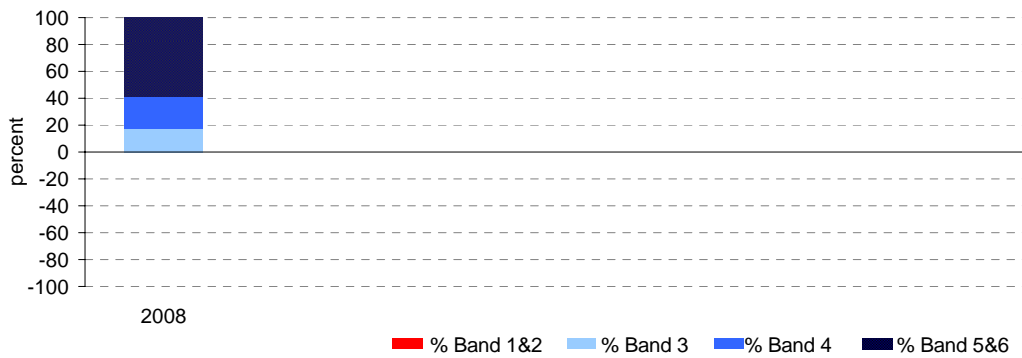
Year 3

| | student participation | | Percent of students by NAP Band | | | | | | Mean Scaled Score | |
|------|-----------------------|------|---------------------------------|--------|--------|--------|--------|--------|-------------------|-------|
| | (n) | (%)* | Band 1 | Band 2 | Band 3 | Band 4 | Band 5 | Band 6 | School | State |
| 2008 | 17 | 100 | 0 | 0 | 18 | 24 | 47 | 12 | 425.6 | 415.8 |

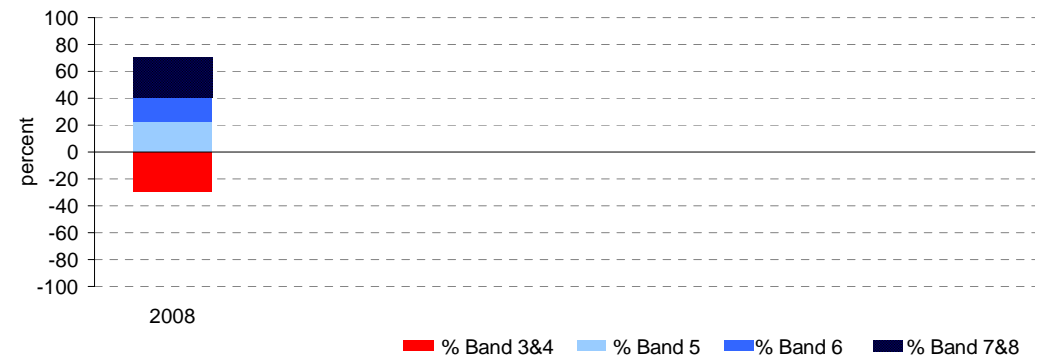
Year 5

| | student participation | | Percent of students by NAP Band | | | | | | Mean Scaled Score | |
|------|-----------------------|------|---------------------------------|--------|--------|--------|--------|--------|-------------------|-------|
| | (n) | (%)* | Band 3 | Band 4 | Band 5 | Band 6 | Band 7 | Band 8 | School | State |
| 2008 | 27 | 93 | 4 | 26 | 22 | 19 | 19 | 11 | 474.7 | 492.1 |

Percent of students by NAP Band

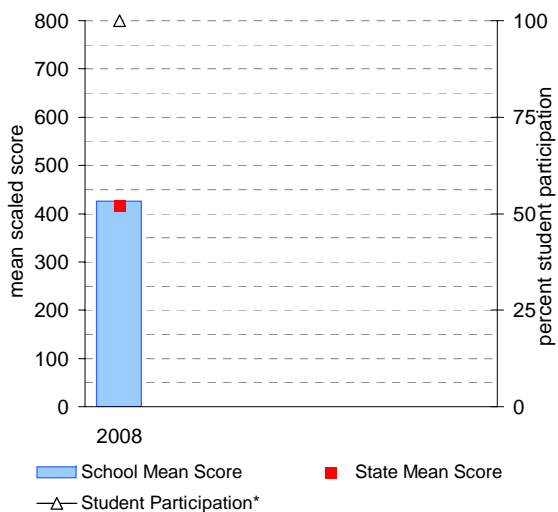


Percent of students by NAP Band

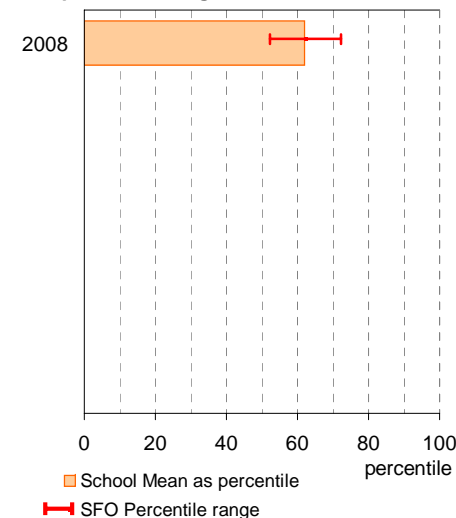


Year 3

School Mean against State Mean, including Participation

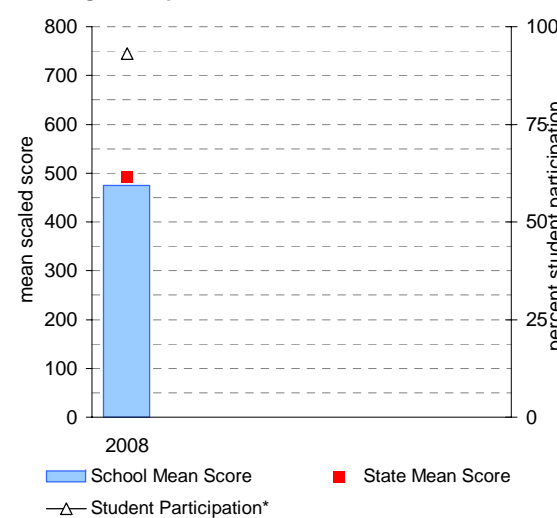


School Mean as percentile against SFO percentile range

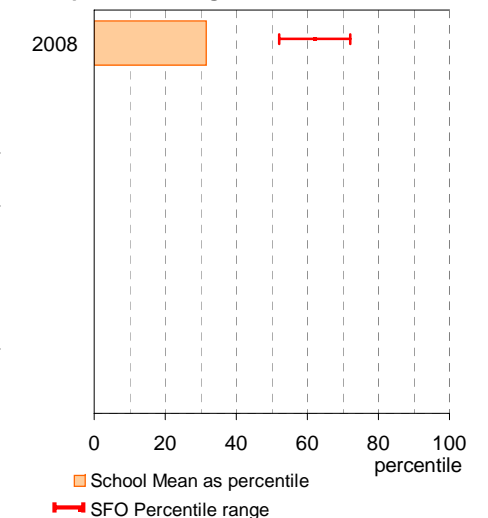


Year 5

School Mean against State Mean, including Participation



School Mean as percentile against SFO percentile range



NAPLAN Year 3 and 5: Writing

School no: 3659

School name: Spotswood Primary School

Source of data: Victorian Curriculum and Assessment Authority.

Explanation: The National Assessment Program - Literacy and Numeracy (NAPLAN) is conducted each year for students in Years 3, 5, 7 and 9. For more detailed NAPLAN data, refer to the NAPLAN Data Service website at <http://naplands.vcaa.vic.edu.au>. A reference guide for analysing NAPLAN data is available at <http://www.vcaa.vic.edu.au/vcaa/prep10/naplan/schools/analysingnaplandata.pdf>.

Notes: * % student participation = (students who participated in NAPLAN / February enrolments) * 100

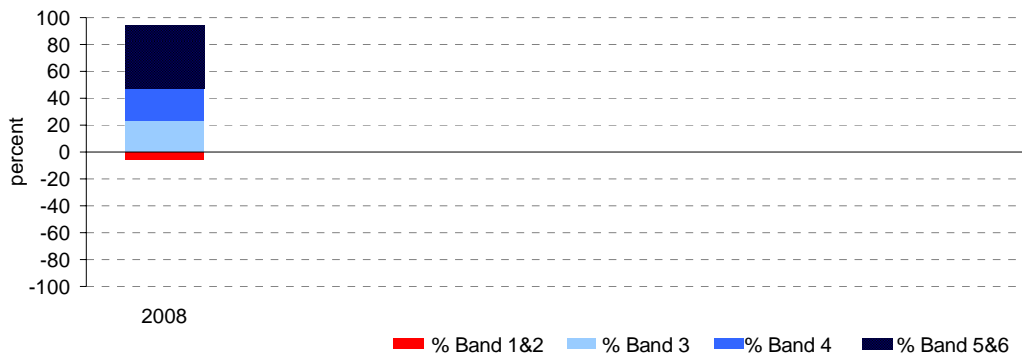
Year 3

| | student participation | | Percent of students by NAP Band | | | | | | Mean Scaled Score | |
|------|-----------------------|------|---------------------------------|--------|--------|--------|--------|--------|-------------------|-------|
| | (n) | (%)* | Band 1 | Band 2 | Band 3 | Band 4 | Band 5 | Band 6 | School | State |
| 2008 | 17 | 100 | 0 | 6 | 24 | 24 | 35 | 12 | 409.0 | 421.2 |

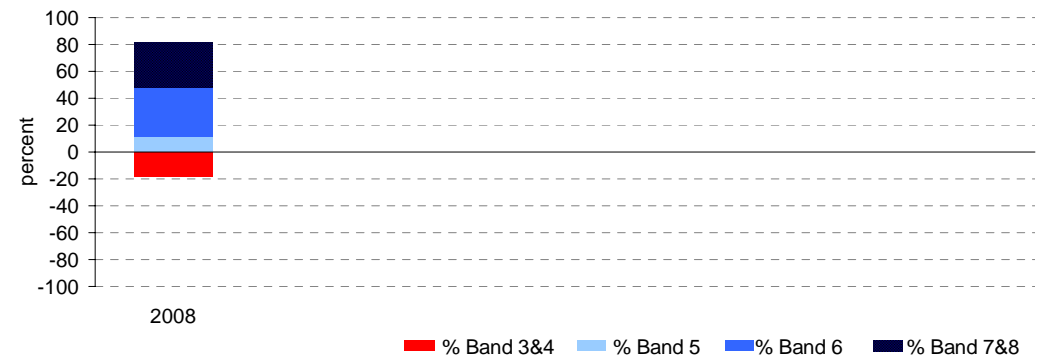
Year 5

| | student participation | | Percent of students by NAP Band | | | | | | Mean Scaled Score | |
|------|-----------------------|------|---------------------------------|--------|--------|--------|--------|--------|-------------------|-------|
| | (n) | (%)* | Band 3 | Band 4 | Band 5 | Band 6 | Band 7 | Band 8 | School | State |
| 2008 | 27 | 93 | 4 | 15 | 11 | 37 | 22 | 11 | 503.0 | 496.0 |

Percent of students by NAP Band

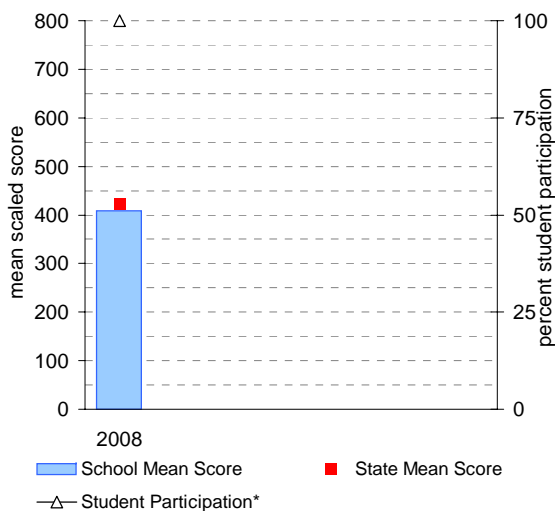


Percent of students by NAP Band

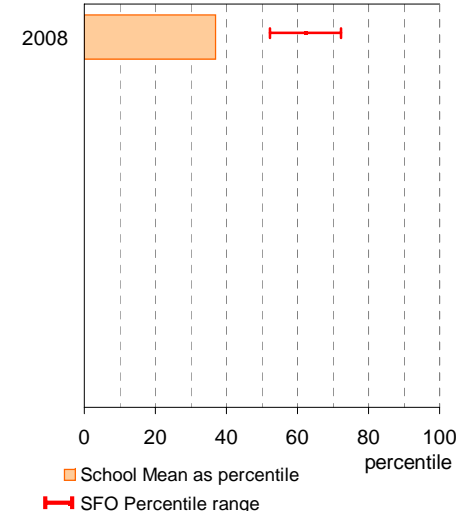


Year 3

School Mean against State Mean, including Participation

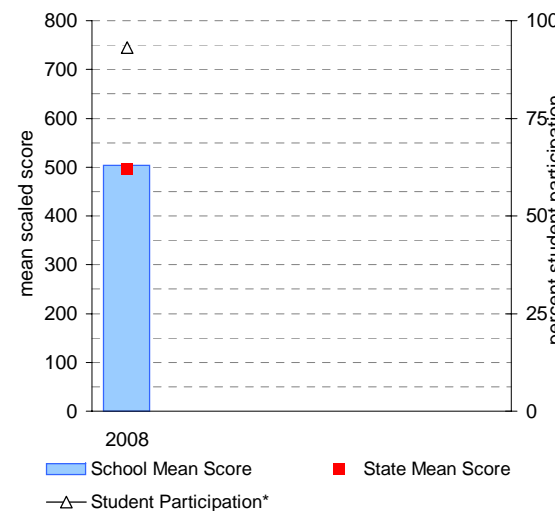


School Mean as percentile against SFO percentile range

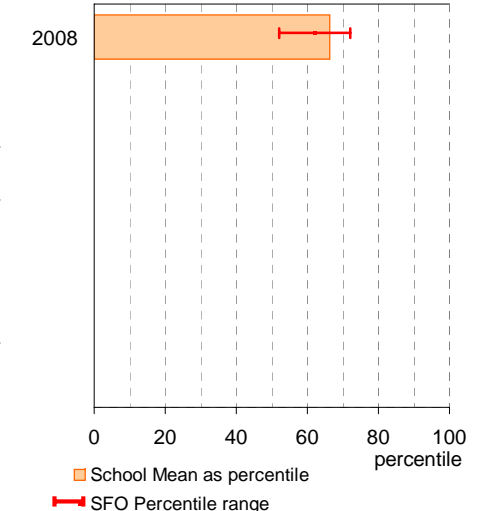


Year 5

School Mean against State Mean, including Participation



School Mean as percentile against SFO percentile range



NAPLAN Year 3 and 5: Numeracy

School no: 3659

School name: Spotswood Primary School

Source of data: Victorian Curriculum and Assessment Authority.

Explanation: The National Assessment Program - Literacy and Numeracy (NAPLAN) is conducted each year for students in Years 3, 5, 7 and 9. For more detailed NAPLAN data, refer to the NAPLAN Data Service website at <http://naplands.vcaa.vic.edu.au>. A reference guide for analysing NAPLAN data is available at <http://www.vcaa.vic.edu.au/vcaa/prep10/naplan/schools/analysingnaplandata.pdf>.

Notes: * % student participation = (students who participated in NAPLAN / February enrolments) * 100

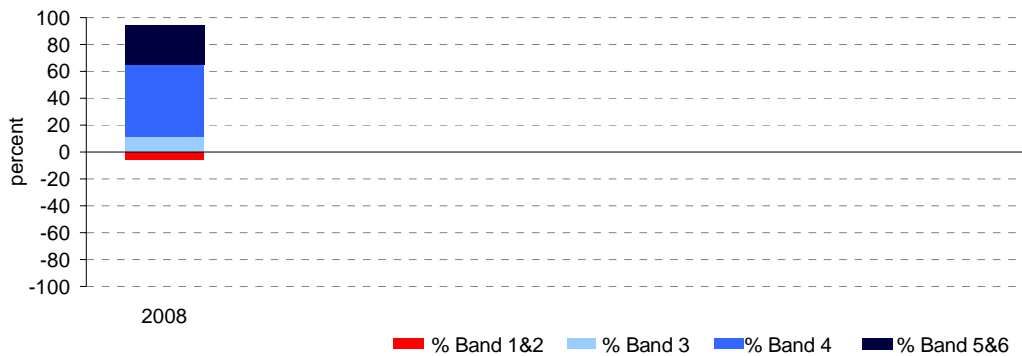
Year 3

| | student participation | | Percent of students by NAP Band | | | | | | Mean Scaled Score | |
|------|-----------------------|------|---------------------------------|--------|--------|--------|--------|--------|-------------------|-------|
| | (n) | (%)* | Band 1 | Band 2 | Band 3 | Band 4 | Band 5 | Band 6 | School | State |
| 2008 | 17 | 100 | 0 | 6 | 12 | 53 | 18 | 12 | 407.6 | 416.1 |

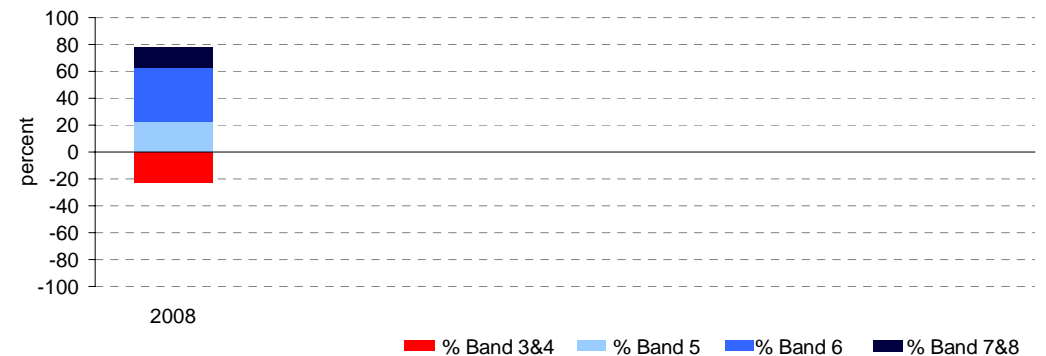
Year 5

| | student participation | | Percent of students by NAP Band | | | | | | Mean Scaled Score | |
|------|-----------------------|------|---------------------------------|--------|--------|--------|--------|--------|-------------------|-------|
| | (n) | (%)* | Band 3 | Band 4 | Band 5 | Band 6 | Band 7 | Band 8 | School | State |
| 2008 | 27 | 93 | 7 | 15 | 22 | 41 | 11 | 4 | 471.5 | 487.8 |

Percent of students by NAP Band

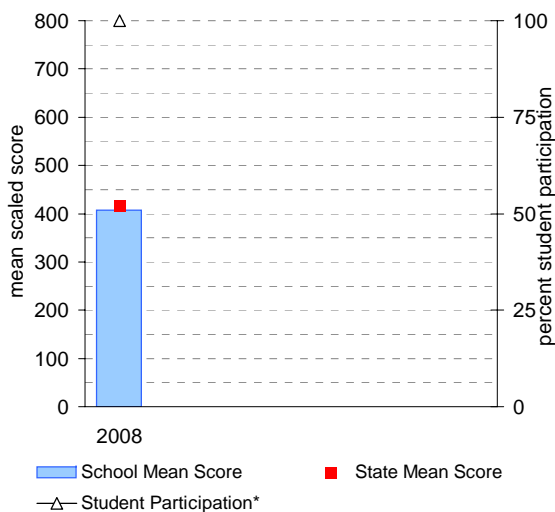


Percent of students by NAP Band

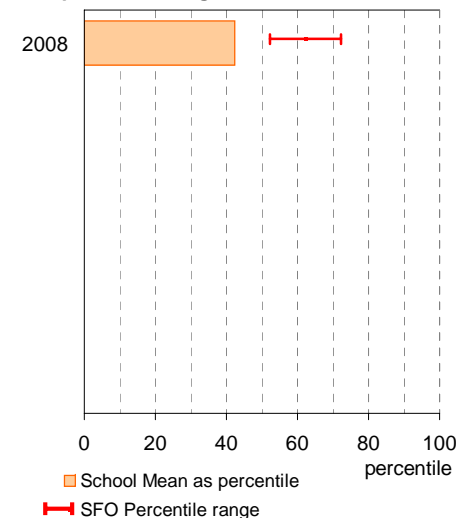


Year 3

School Mean against State Mean, including Participation

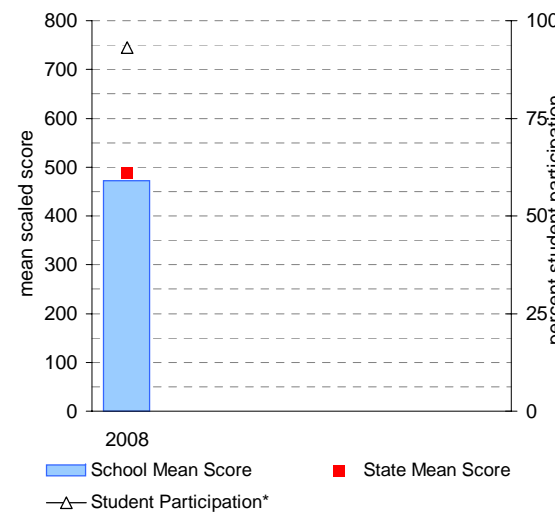


School Mean as percentile against SFO percentile range

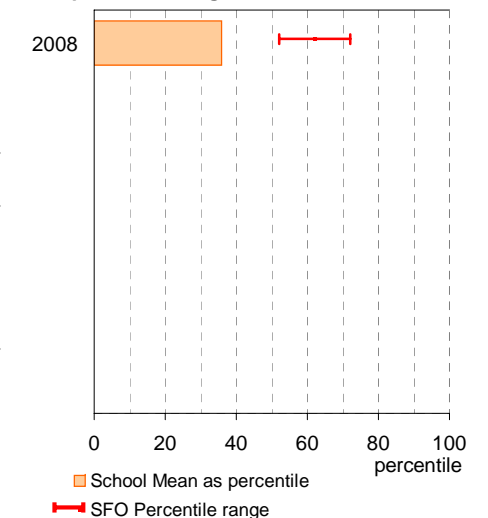


Year 5

School Mean against State Mean, including Participation



School Mean as percentile against SFO percentile range



AIM Year 3 and 5: Reading

School no: 3659

School name: Spotswood Primary School

Source of data: Victorian Curriculum and Assessment Authority.

Explanation: The Achievement Improvement Monitor (AIM) was a statewide assessment program conducted each year up until and including 2007 for students in Years 3, 5, 7 and 9. This has now been replaced by NAPLAN. For more detailed AIM data, refer to the AIM Data Service website at <http://aimds.vcaa.vic.edu.au>.

Notes: * The school trendline is only plotted when there is data for each calendar year.
** % student participation = (students who participated in AIM / Feb enrolments) * 100

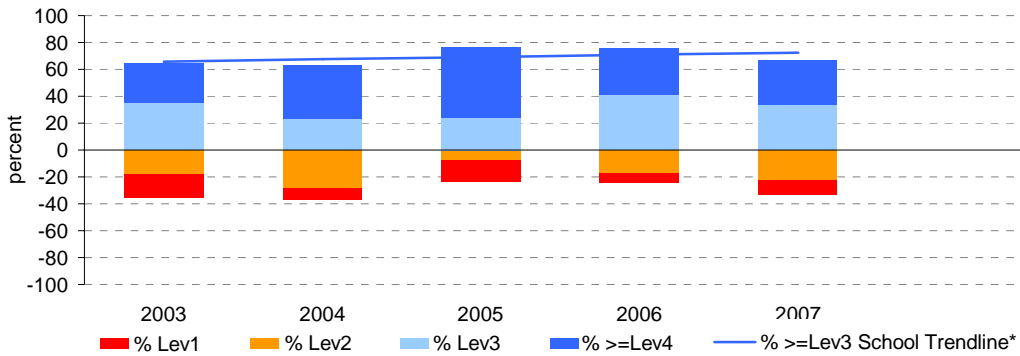
Year 3

| | student participation | | Percent of students by VEL5 level | | | | | | | Mean CSF / VEL5 Score | |
|------|-----------------------|-------|-----------------------------------|------|------|------|------|------|-------|-----------------------|-------|
| | (n) | (%)** | Lev1 | Lev2 | Lev3 | Lev4 | Lev5 | Lev6 | Lev6E | School | State |
| 2003 | 17 | 81 | 18 | 18 | 35 | 29 | 0 | 0 | 0 | 2.2 | 2.3 |
| 2004 | 35 | 80 | 9 | 29 | 23 | 40 | 0 | 0 | 0 | 2.5 | 2.3 |
| 2005 | 25 | 89 | 16 | 8 | 24 | 52 | 0 | 0 | 0 | 2.6 | 2.4 |
| 2006 | 29 | 100 | 7 | 17 | 41 | 34 | 0 | 0 | 0 | 2.5 | 2.3 |
| 2007 | 27 | 96 | 11 | 22 | 33 | 33 | 0 | 0 | 0 | 2.4 | 2.3 |

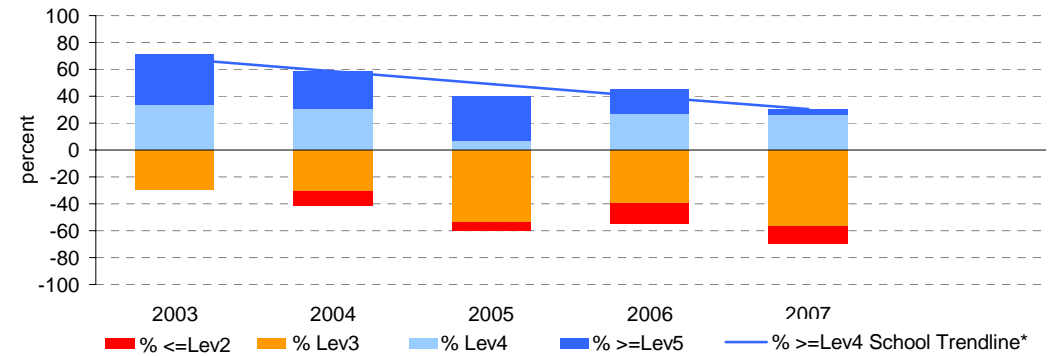
Year 5

| | student participation | | Percent of students by VEL5 level | | | | | | | Mean CSF / VEL5 Score | |
|------|-----------------------|-------|-----------------------------------|------|------|------|------|------|-------|-----------------------|-------|
| | (n) | (%)** | Lev1 | Lev2 | Lev3 | Lev4 | Lev5 | Lev6 | Lev6E | School | State |
| 2003 | 24 | 71 | 0 | 0 | 29 | 33 | 38 | 0 | 0 | 3.7 | 3.2 |
| 2004 | 29 | 97 | 0 | 10 | 31 | 31 | 28 | 0 | 0 | 3.4 | 3.2 |
| 2005 | 15 | 79 | 0 | 7 | 53 | 7 | 33 | 0 | 0 | 3.1 | 3.2 |
| 2006 | 33 | 84 | 0 | 15 | 39 | 27 | 18 | 0 | 0 | 3.0 | 3.1 |
| 2007 | 23 | 88 | 0 | 13 | 57 | 26 | 4 | 0 | 0 | 2.7 | 3.2 |

Percent of students by VEL5 level

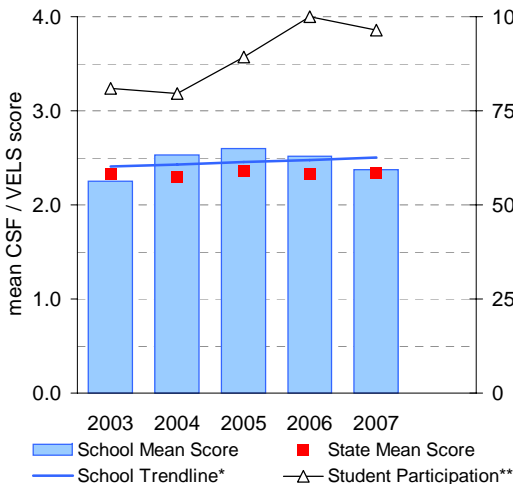


Percent of students by VEL5 level

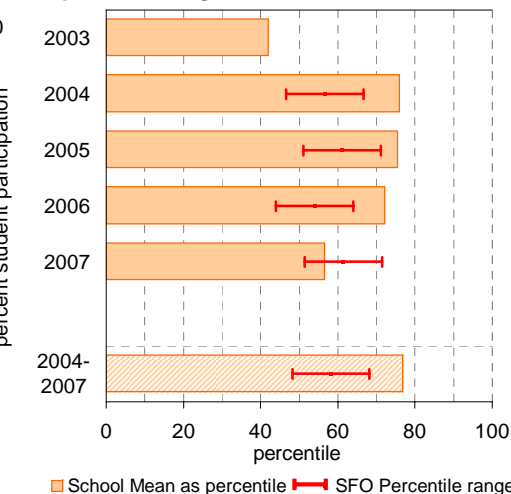


Year 3

School Mean against State Mean, including Participation

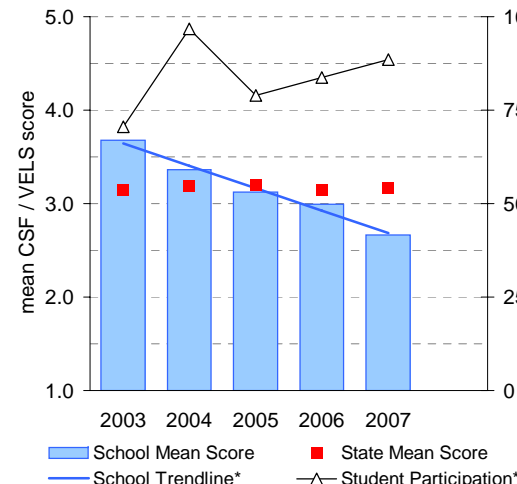


School Mean as percentile against SFO percentile range

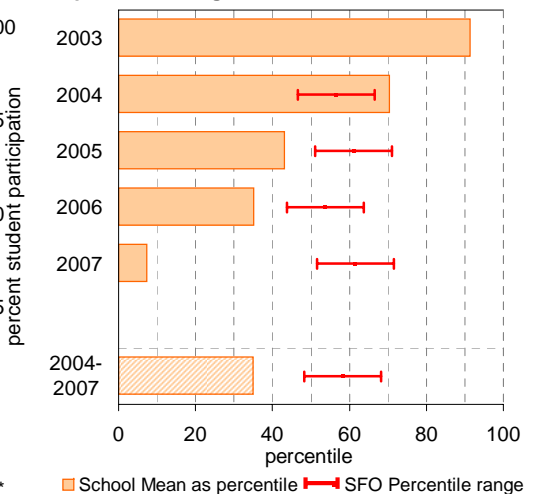


Year 5

School Mean against State Mean, including Participation



School Mean as percentile against SFO percentile range



AIM Year 3 and 5: Number

School no: 3659

School name: Spotswood Primary School

Source of data: Victorian Curriculum and Assessment Authority.

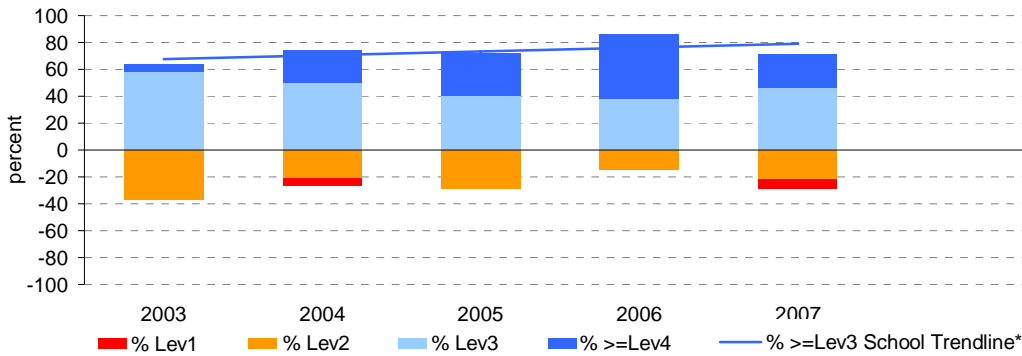
Explanation: The Achievement Improvement Monitor (AIM) was a statewide assessment program conducted each year up until and including 2007 for students in Years 3, 5, 7 and 9. This has now been replaced by NAPLAN. For more detailed AIM data, refer to the AIM Data Service website at <http://aimds.vcaa.vic.edu.au>.

Notes: * The school trendline is only plotted when there is data for each calendar year.
 ** % student participation = (students who participated in AIM / Feb enrolments) * 100

Year 3

| | student participation | | Percent of students by VEL5 level | | | | | | | Mean CSF / VEL5 Score | |
|------|-----------------------|-------|-----------------------------------|------|------|------|------|------|-------|-----------------------|-------|
| | (n) | (%)** | Lev1 | Lev2 | Lev3 | Lev4 | Lev5 | Lev6 | Lev6E | School | State |
| 2003 | 19 | 90 | 0 | 37 | 58 | 5 | 0 | 0 | 0 | 2.2 | 2.4 |
| 2004 | 38 | 86 | 5 | 21 | 50 | 24 | 0 | 0 | 0 | 2.4 | 2.4 |
| 2005 | 25 | 89 | 0 | 28 | 40 | 32 | 0 | 0 | 0 | 2.6 | 2.4 |
| 2006 | 29 | 100 | 0 | 14 | 38 | 48 | 0 | 0 | 0 | 2.7 | 2.4 |
| 2007 | 28 | 100 | 7 | 21 | 46 | 25 | 0 | 0 | 0 | 2.3 | 2.4 |

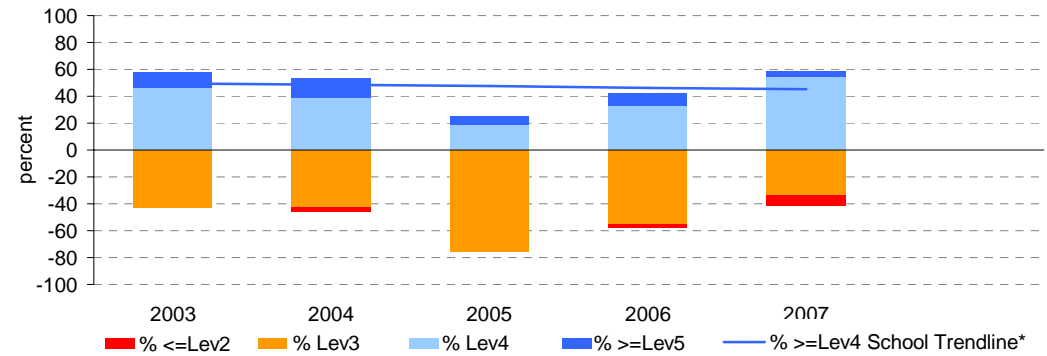
Percent of students by VEL5 level



Year 5

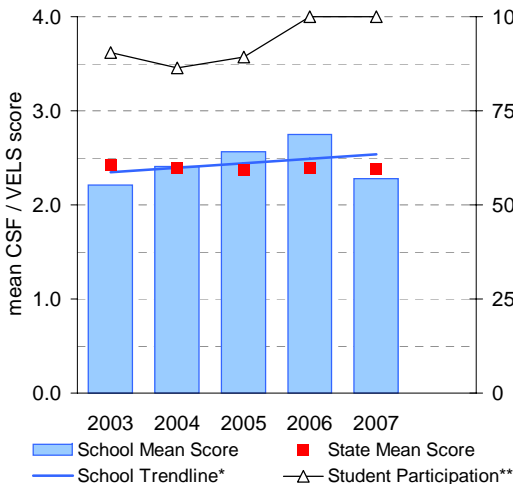
| | student participation | | Percent of students by VEL5 level | | | | | | | Mean CSF / VEL5 Score | |
|------|-----------------------|-------|-----------------------------------|------|------|------|------|------|-------|-----------------------|-------|
| | (n) | (%)** | Lev1 | Lev2 | Lev3 | Lev4 | Lev5 | Lev6 | Lev6E | School | State |
| 2003 | 26 | 76 | 0 | 0 | 42 | 46 | 12 | 0 | 0 | 3.1 | 3.1 |
| 2004 | 28 | 93 | 0 | 4 | 43 | 39 | 14 | 0 | 0 | 3.1 | 3.2 |
| 2005 | 16 | 84 | 0 | 0 | 75 | 19 | 6 | 0 | 0 | 2.8 | 3.2 |
| 2006 | 33 | 84 | 0 | 3 | 55 | 33 | 9 | 0 | 0 | 3.1 | 3.2 |
| 2007 | 24 | 92 | 0 | 8 | 33 | 54 | 4 | 0 | 0 | 2.9 | 3.2 |

Percent of students by VEL5 level

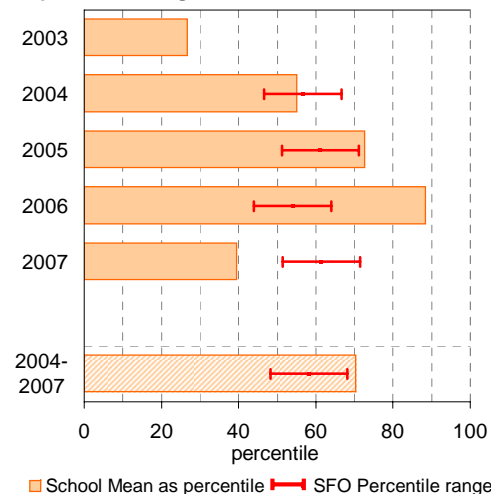


Year 3

School Mean against State Mean, including Participation

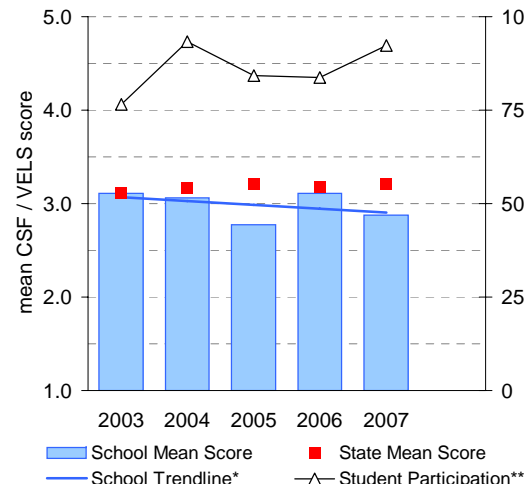


School Mean as percentile against SFO percentile range

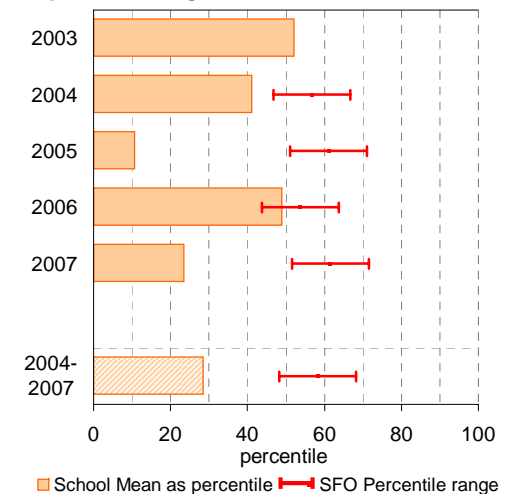


Year 5

School Mean against State Mean, including Participation



School Mean as percentile against SFO percentile range



Teacher Assessment of Student Progress (PSD students)

School no: 3659

School name: Spotswood Primary School

Explanation: Teachers assess their students' progress against the 8 VELs Domains / CSF KLAs using a 6-point scale (students in special schools and those who cannot be assessed against the VELs / CSF).

Source of data: Data transmitted from school to DEECD via an online web-form.

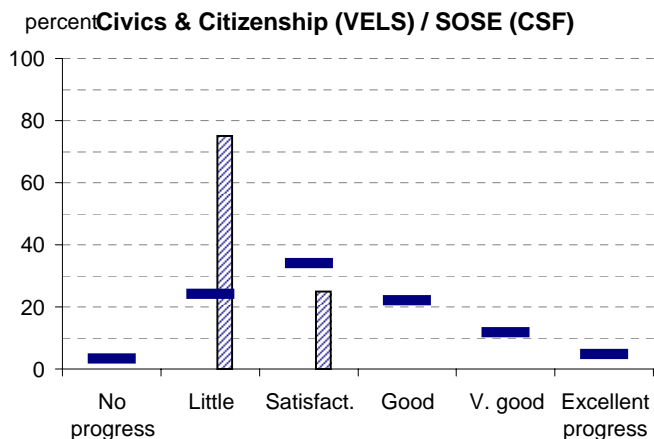
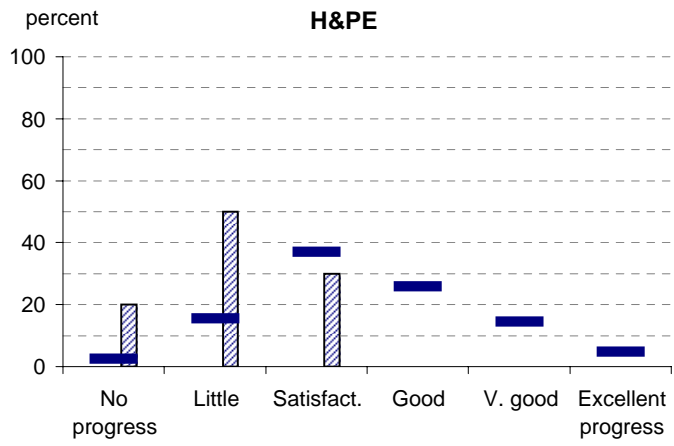
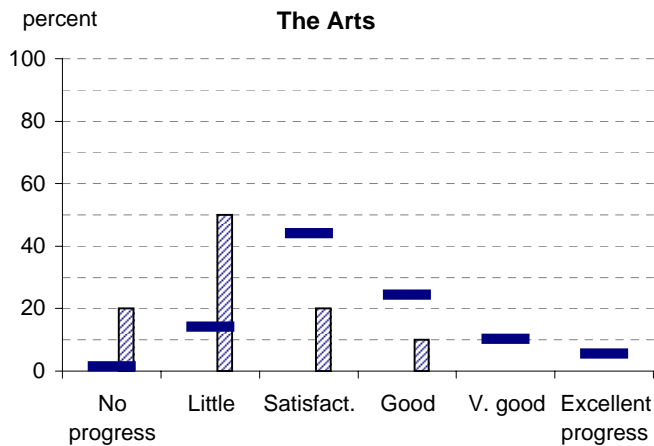
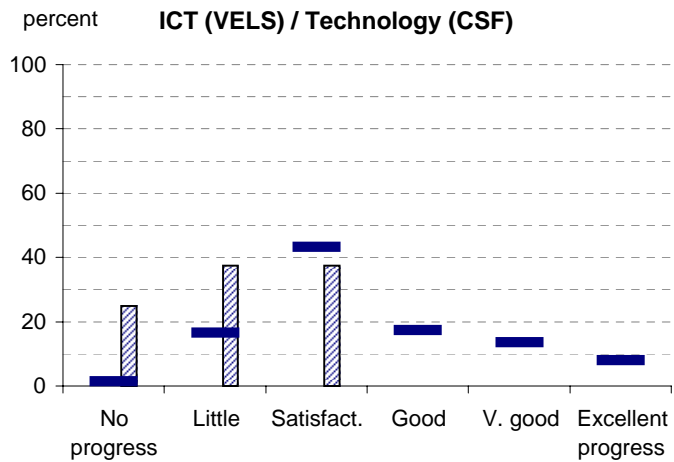
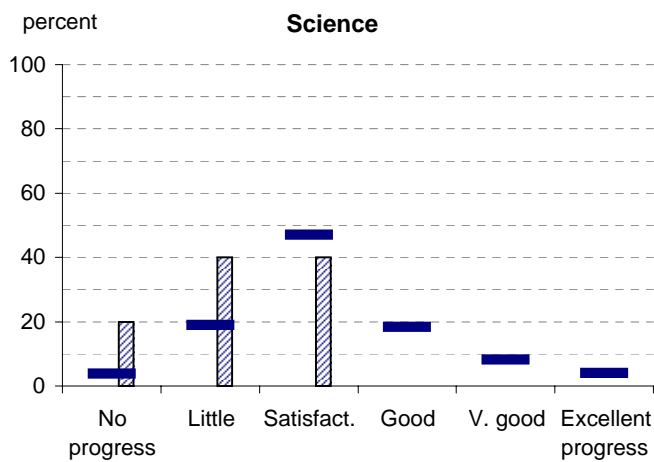
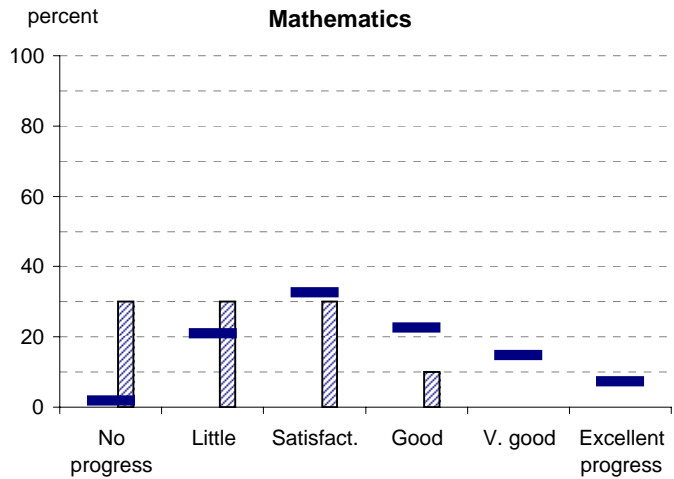
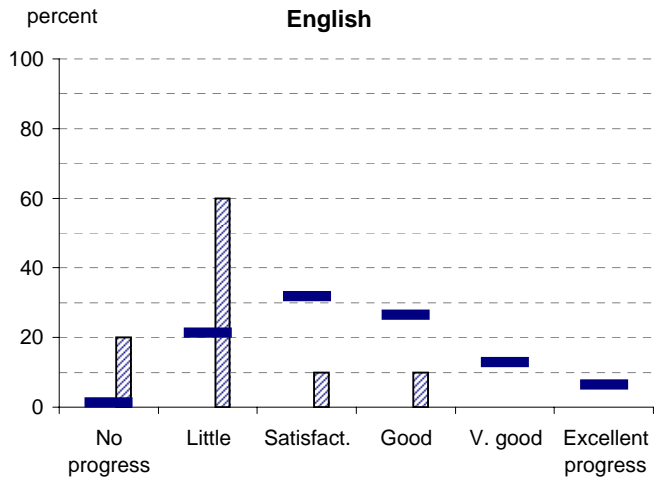
| | No progress (%) | Little progress (%) | Satisfactory progress (%) | Good progress (%) | Very good progress (%) | Excellent progress (%) | Total students assessed ¹ (no.) |
|--|--------------------|---------------------------|---------------------------------|-------------------------|------------------------------|------------------------------|--|
| 2004 (by CSF KLA) | | | | | | | |
| English | | | | | | | |
| Mathematics | | | | | | | |
| Science | | | | | | | |
| Technology | | | | | | | |
| The Arts | | | | | | | |
| H&PE | | | | | | | |
| SOSE | | | | | | | |
| 2005 (by CSF KLA) | | | | | | | |
| English | | | | | | | |
| Mathematics | | | | | | | |
| Science | | | | | | | |
| Technology | | | | | | | |
| The Arts | | | | | | | |
| H&PE | | | | | | | |
| SOSE | | | | | | | |
| 2006 (by VELs Domain) | | | | | | | |
| English | | | | | | | |
| Mathematics | | | | | | | |
| Science | | | | | | | |
| ICT | | | | | | | |
| The Arts | | | | | | | |
| H&PE | | | | | | | |
| Civics & Citizenship | | | | | | | |
| 2007 (by VELs Domain) | | | | | | | |
| English | 20 | 60 | 10 | 10 | | | 10 |
| Mathematics | 30 | 30 | 30 | 10 | | | 10 |
| Science | 20 | 40 | 40 | | | | 10 |
| ICT | 25 | 38 | 38 | | | | 8 |
| The Arts | 20 | 50 | 20 | 10 | | | 10 |
| H&PE | 20 | 50 | 30 | | | | 10 |
| Civics & Citizenship | | 75 | 25 | | | | 4 |
| 2008 (by VELs Domain) | | | | | | | |
| English | | | | | | | |
| Mathematics | | | | | | | |
| Science | | | | | | | |
| ICT | | | | | | | |
| The Arts | | | | | | | |
| H&PE | | | | | | | |
| Civics & Citizenship | | | | | | | |
| 2007 Primary state benchmarks (by VELs Domain)* | | | | | | | |
| English | 1 | 21 | 32 | 26 | 13 | 6 | |
| Mathematics | 2 | 21 | 33 | 23 | 15 | 7 | |
| Science | 4 | 19 | 47 | 18 | 8 | 4 | |
| ICT | 1 | 17 | 43 | 17 | 14 | 8 | |
| The Arts | 2 | 14 | 44 | 24 | 10 | 5 | |
| H&PE | 2 | 15 | 37 | 26 | 15 | 5 | |
| Civics & Citizenship | 3 | 24 | 34 | 22 | 12 | 5 | |

Notes: ¹ If schools provided percentages only, it is not possible to report the number of students assessed. In these cases, the total percentage (100) will be shown.

* 2008 benchmarks will be calculated in August, when data from all schools has been submitted.

Teacher Assessment of Student Progress (PSD students)

School no: 3659
 School name: Spotswood Primary School



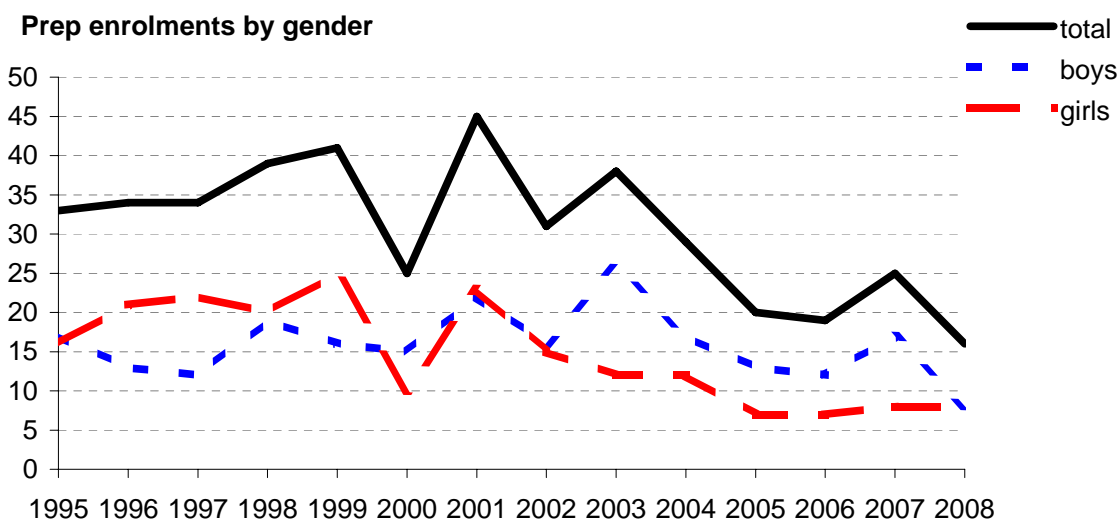
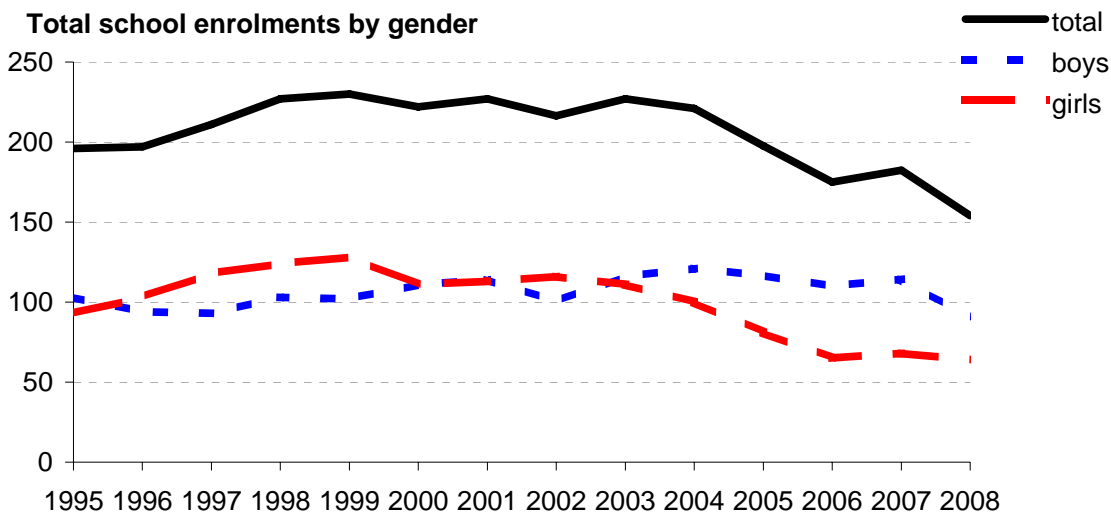
- 2004 (by CSF KLA)
- 2005 (by CSF KLA)
- 2006 (by VELS Domain)
- 2007 (by VELS Domain)
- 2008 (by VELS Domain)
- 2007 Primary state benchmarks (by VELS Domain)*

Notes: * 2008 benchmarks will be calculated in August, when data from all schools has been submitted.

Enrolments

School no: 3659
School name: Spotswood Primary School
Explanation: Enrolments at February census.
Source of data: February census.

| Year | Total school enrolment | | | Prep enrolment | | | Year 7 enrolments | | |
|------|------------------------|-------|-------|----------------|-------|-------|-------------------|-------|-------|
| | boys | girls | total | boys | girls | total | boys | girls | total |
| 1995 | 103 | 93 | 196 | 17 | 16 | 33 | | | |
| 1996 | 94 | 103 | 197 | 13 | 21 | 34 | | | |
| 1997 | 93 | 118 | 211 | 12 | 22 | 34 | | | |
| 1998 | 103 | 124 | 227 | 19 | 20 | 39 | | | |
| 1999 | 102 | 128 | 230 | 16 | 25 | 41 | | | |
| 2000 | 111 | 111 | 222 | 15 | 10 | 25 | | | |
| 2001 | 114 | 113 | 227 | 22 | 23 | 45 | | | |
| 2002 | 100 | 116 | 216 | 16 | 15 | 31 | | | |
| 2003 | 116 | 111 | 227 | 26 | 12 | 38 | | | |
| 2004 | 121 | 100 | 221 | 17 | 12 | 29 | | | |
| 2005 | 117 | 81 | 198 | 13 | 7 | 20 | | | |
| 2006 | 110 | 65 | 175 | 12 | 7 | 19 | | | |
| 2007 | 114 | 68 | 182 | 17 | 8 | 25 | | | |
| 2008 | 90 | 64 | 154 | 8 | 8 | 16 | | | |



Student Absence

School no: 3659

School name: Spotswood Primary School

Source of data: Data retrieved electronically from CASES21.

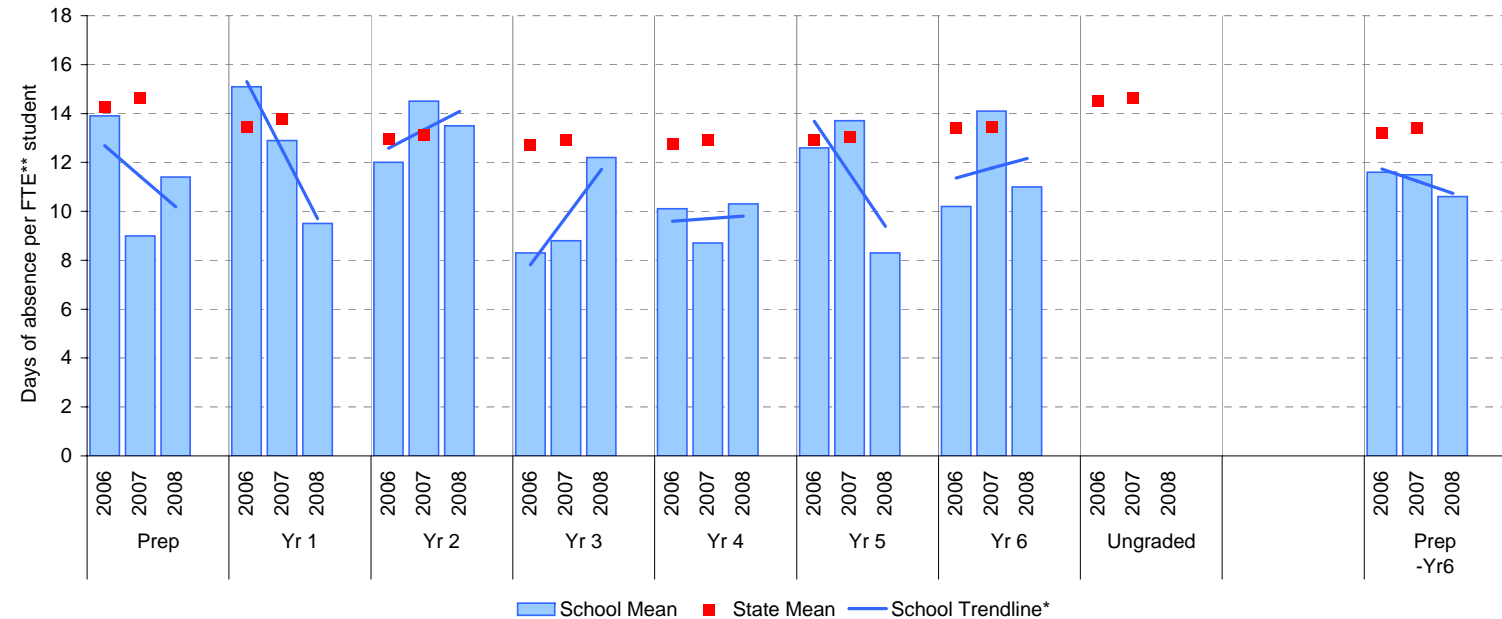
Explanation: The average (mean) number of absent days† per FTE** student.

Note that 20 absent days equates to 1 absent day per fortnight, and 10 absent days to 1 absent day per month.

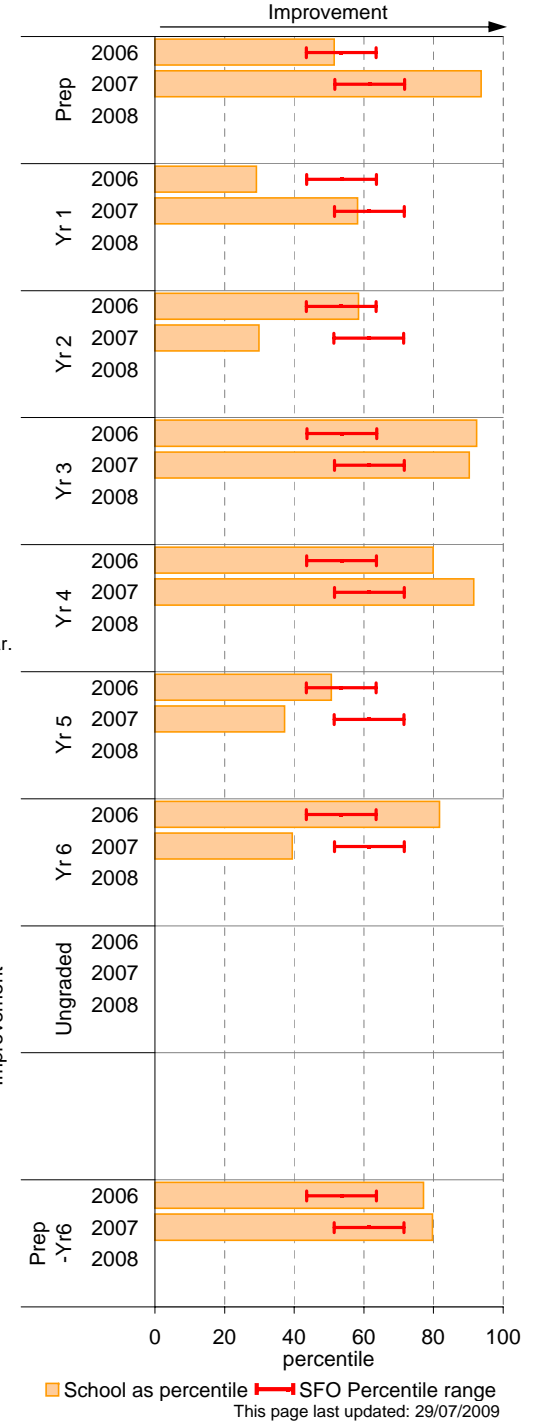
| | School | | | | | | 2007 state benchmark^ | | |
|----------|------------|---------------------------------|------------|---------------------------------|------------|---------------------------------|-----------------------|------|------------|
| | 2006 | | 2007 | | 2008 | | 25th ptile | Mean | 75th ptile |
| | Enrolments | Avg absent days / FTE** student | Enrolments | Avg absent days / FTE** student | Enrolments | Avg absent days / FTE** student | | | |
| Prep | 19.0 | 13.9 | 25.3 | 9 | 16.1 | 11.4 | 12.0 | 14.6 | 17.7 |
| Yr 1 | 17.6 | 15.1 | 19.1 | 12.9 | 26.2 | 9.5 | 11.5 | 13.8 | 16.1 |
| Yr 2 | 29.1 | 12 | 17.8 | 14.5 | 16.4 | 13.5 | 11.0 | 13.1 | 15.1 |
| Yr 3 | 30.1 | 8.3 | 28.0 | 8.8 | 16.4 | 12.2 | 10.8 | 12.9 | 14.9 |
| Yr 4 | 27.9 | 10.1 | 29.5 | 8.7 | 25.7 | 10.3 | 10.8 | 12.9 | 15.0 |
| Yr 5 | 38.1 | 12.6 | 26.1 | 13.7 | 28.1 | 8.3 | 10.6 | 13.1 | 15.0 |
| Yr 6 | 16.8 | 10.2 | 35.9 | 14.1 | 24.1 | 11 | 11.0 | 13.4 | 15.7 |
| Ungraded | | | | | | | | 14.6 | |
| P-6 mean | | 11.6 | | 11.5 | | 10.6 | | 13.4 | |

Notes: † Includes non-curriculum absences only (absence codes 200, 201, 202, 203, 205, 206, 207, 208, 209, 210, 211, 300, 401, 500, 700, 800, 804, 805, 900).
 * The school trendline is only plotted when there is data for each calendar year.
 ** FTE = Full Time Equivalent (including part-time and part-year fractions).
 ^ 2008 benchmarks and percentiles will be calculated in August, when data from all schools has been submitted.

School Mean against State Mean^



School Mean as percentile against SFO percentile range^



Parent Opinion

School no: 3659

School name: Spotswood Primary School

Explanation: A self-completion questionnaire to obtain parents' opinions of the school. Parents rated a number of statements using a scale where 1=strongly disagree & 7=strongly agree. The statements were grouped into the following categories.

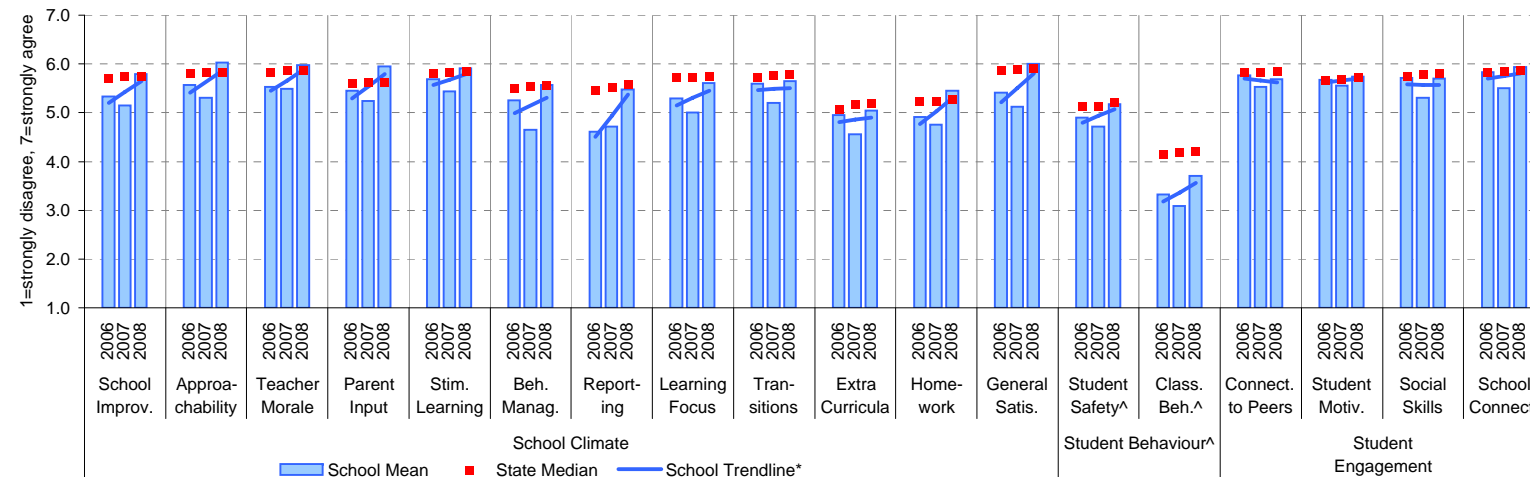
Source of data: Data scanned from questionnaires completed by parents.

| Variable No. | Name | Year | School mean | State Primary median |
|--------------|----------------------|------|-------------|----------------------|
| 1 | School Improvement | 2006 | 5.34 | 5.71 |
| | | 2007 | 5.15 | 5.75 |
| | | 2008 | 5.79 | 5.74 |
| 2 | Approachability | 2006 | 5.57 | 5.81 |
| | | 2007 | 5.31 | 5.82 |
| | | 2008 | 6.03 | 5.83 |
| 3 | Teacher Morale | 2006 | 5.53 | 5.82 |
| | | 2007 | 5.49 | 5.86 |
| | | 2008 | 5.97 | 5.85 |
| 4 | Parent Input | 2006 | 5.45 | 5.59 |
| | | 2007 | 5.24 | 5.62 |
| | | 2008 | 5.94 | 5.62 |
| 5 | Stimulating Learning | 2006 | 5.68 | 5.81 |
| | | 2007 | 5.44 | 5.84 |
| | | 2008 | 5.92 | 5.84 |
| 6 | Behaviour Management | 2006 | 5.25 | 5.51 |
| | | 2007 | 4.64 | 5.54 |
| | | 2008 | 5.57 | 5.55 |
| 7 | Reporting | 2006 | 4.61 | 5.45 |
| | | 2007 | 4.72 | 5.51 |
| | | 2008 | 5.48 | 5.56 |

| Variable No. | Name | Year | School mean | State Primary median |
|--------------|----------------------|------|-------------|----------------------|
| 8 | Learning Focus | 2006 | 5.30 | 5.71 |
| | | 2007 | 5.00 | 5.72 |
| | | 2008 | 5.61 | 5.73 |
| 9 | Transitions | 2006 | 5.60 | 5.72 |
| | | 2007 | 5.21 | 5.76 |
| | | 2008 | 5.65 | 5.79 |
| 10 | Extra Curricula | 2006 | 4.95 | 5.07 |
| | | 2007 | 4.56 | 5.17 |
| | | 2008 | 5.05 | 5.19 |
| 11 | Homework | 2006 | 4.91 | 5.23 |
| | | 2007 | 4.76 | 5.23 |
| | | 2008 | 5.45 | 5.28 |
| 12 | General Satisfaction | 2006 | 5.41 | 5.87 |
| | | 2007 | 5.12 | 5.88 |
| | | 2008 | 6.00 | 5.91 |
| 13 | Student Safety^ | 2006 | 4.91 | 5.13 |
| | | 2007 | 4.72 | 5.12 |
| | | 2008 | 5.18 | 5.20 |
| 14 | Classroom Behaviour^ | 2006 | 3.32 | 4.15 |
| | | 2007 | 3.09 | 4.18 |
| | | 2008 | 3.70 | 4.20 |

| Variable No. | Name | Year | School mean | State Primary median |
|--------------|------------------------|------|-------------|----------------------|
| 15 | Connectedness to Peers | 2006 | 5.77 | 5.83 |
| | | 2007 | 5.53 | 5.83 |
| | | 2008 | 5.69 | 5.85 |
| 16 | Student Motivation | 2006 | 5.67 | 5.66 |
| | | 2007 | 5.56 | 5.69 |
| | | 2008 | 5.75 | 5.72 |
| 17 | Social Skills | 2006 | 5.72 | 5.76 |
| | | 2007 | 5.31 | 5.78 |
| | | 2008 | 5.70 | 5.81 |
| 18 | School Connectedness | 2006 | 5.83 | 5.83 |
| | | 2007 | 5.50 | 5.85 |
| | | 2008 | 5.93 | 5.86 |

School Mean against Primary State Mean



Notes: * The school trendline is plotted when there is data for each calendar year.

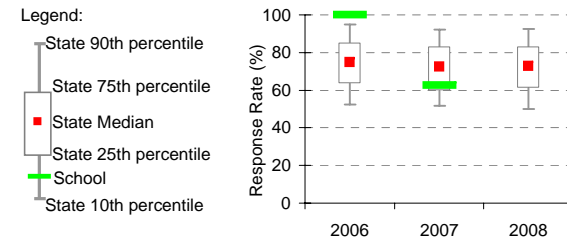
^^ Benchmarks available for Primary, Secondary, Pri/Sec, Special and SDS schools.

** If there were 6 or less respondents, table data is not shown for confidentiality reasons. If there were 3 or less respondents, graph data is not shown for confidentiality reasons.

^ Parents' responses to all negatively phrased questions have been reversed for reporting purposes. Across all variables, the higher the score or percentile rank, the more positive parents' perceptions.

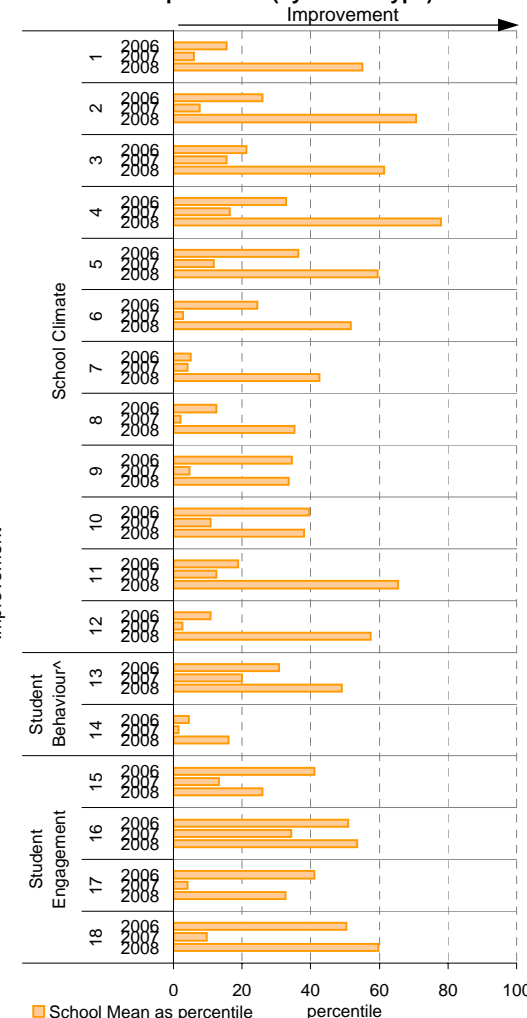
Produced by Data, Outcomes and Evaluation Division, DEECD

School response rate** against Primary school distribution



| Year | No. of respondents | No. invited | Response Rate |
|------|--------------------|-------------|---------------|
| 2006 | 32 | 32 | 100% |
| 2007 | 25 | 40 | 62.5% |
| 2008 | 30 | | N/A |

School Mean as percentile (by school type)



Legend: School Mean as percentile

This page last updated: 29/07/2009

Staff Opinion

School no: 3659

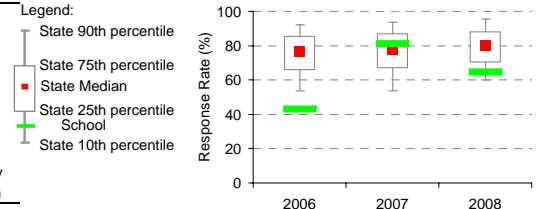
School name: Spotswood Primary School

Explanation: A self-completion questionnaire to obtain the staff's opinions of the school. The survey was administered online using the School Organisational Health Questionnaire.

Source of data: Data transmitted from school staff to DEECD via an online survey application.

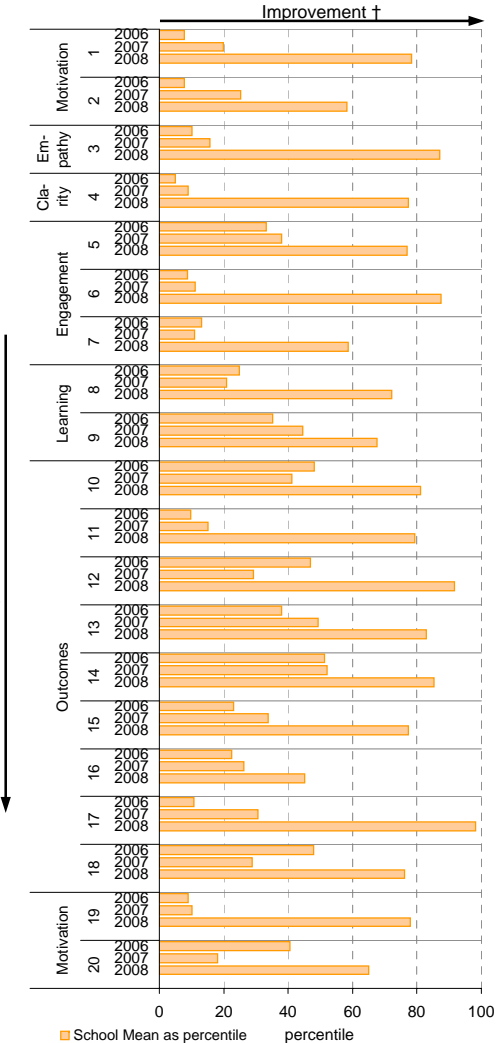
| Variable | No. | Name | Year | School mean | State Primary median |
|---------------------------------|------|------|------|-------------|----------------------|
| 1 Individual Morale | 2006 | 63.7 | 75.6 | | |
| | 2007 | 70.0 | 76.8 | | |
| | 2008 | 84.2 | 78.1 | | |
| 2 School Morale | 2006 | 60.6 | 78.1 | | |
| | 2007 | 71.2 | 79.2 | | |
| | 2008 | 82.7 | 80.8 | | |
| 3 Supportive Leadership | 2006 | 63.9 | 80.0 | | |
| | 2007 | 69.1 | 80.6 | | |
| | 2008 | 94.1 | 82.2 | | |
| 4 Role Clarity | 2006 | 65.3 | 79.6 | | |
| | 2007 | 68.8 | 80.1 | | |
| | 2008 | 87.5 | 81.3 | | |
| 5 Professional Interaction | 2006 | 77.0 | 80.7 | | |
| | 2007 | 79.4 | 81.9 | | |
| | 2008 | 89.3 | 83.2 | | |
| 6 Participative Decision-Making | 2006 | 59.0 | 75.1 | | |
| | 2007 | 62.1 | 76.3 | | |
| | 2008 | 89.8 | 77.4 | | |
| 7 Goal Congruence | 2006 | 71.7 | 81.7 | | |
| | 2007 | 71.2 | 82.6 | | |
| | 2008 | 85.4 | 83.7 | | |
| 8 Appraisal & Recognition | 2006 | 64.3 | 71.6 | | |
| | 2007 | 64.0 | 73.1 | | |
| | 2008 | 80.8 | 75.0 | | |
| 9 Professional Growth | 2006 | 70.6 | 74.2 | | |
| | 2007 | 74.4 | 76.0 | | |
| | 2008 | 81.4 | 76.9 | | |
| 10 Curriculum Coordination | 2006 | 75.0 | 75.0 | | |
| | 2007 | 73.3 | 75.6 | | |
| | 2008 | 86.6 | 77.9 | | |
| 11 Effective Discipline Policy | 2006 | 63.4 | 79.9 | | |
| | 2007 | 67.6 | 80.9 | | |
| | 2008 | 90.2 | 82.0 | | |
| 12 Student Orientation | 2006 | 85.7 | 86.1 | | |
| | 2007 | 83.3 | 86.6 | | |
| | 2008 | 97.6 | 87.5 | | |
| 13 Student Motivation | 2006 | 73.6 | 76.8 | | |
| | 2007 | 77.7 | 77.9 | | |
| | 2008 | 88.6 | 79.5 | | |
| 14 Student Decision-Making | 2006 | 70.0 | 69.4 | | |
| | 2007 | 71.8 | 71.3 | | |
| | 2008 | 84.3 | 72.9 | | |
| 15 Learning Environment | 2006 | 74.1 | 81.3 | | |
| | 2007 | 79.0 | 82.5 | | |
| | 2008 | 90.2 | 84.1 | | |
| 16 Student Misbehaviour | 2006 | 35.7 | 21.7 | | |
| | 2007 | 31.8 | 21.5 | | |
| | 2008 | 21.4 | 20.0 | | |
| 17 Classroom Misbehaviour | 2006 | 24.2 | 13.8 | | |
| | 2007 | 16.5 | 13.3 | | |
| | 2008 | 5.0 | 12.6 | | |
| 18 Excessive Work Demands | 2006 | 43.8 | 42.9 | | |
| | 2007 | 51.1 | 43.2 | | |
| | 2008 | 31.3 | 41.7 | | |
| 19 Individual Distress | 2006 | 34.4 | 21.6 | | |
| | 2007 | 32.3 | 21.1 | | |
| | 2008 | 13.0 | 20.0 | | |
| 20 School Distress | 2006 | 32.8 | 28.8 | | |
| | 2007 | 41.5 | 28.3 | | |
| | 2008 | 21.4 | 26.7 | | |

School response rate** against Primary school distribution

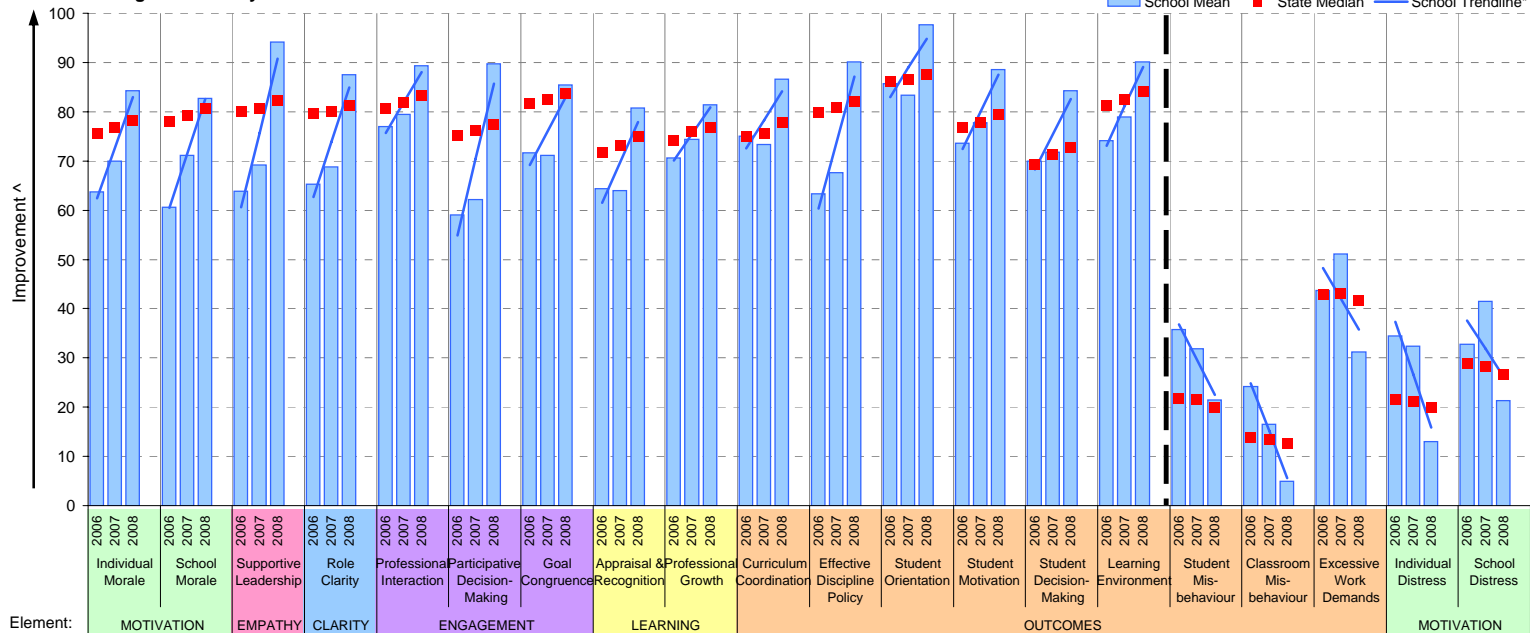


| Year | No. of respondents | No. invited | Response Rate |
|------|--------------------|-------------|---------------|
| 2006 | 9 | 21 | 43% |
| 2007 | 17 | 21 | 81% |
| 2008 | 11 | 17 | 65% |

School Mean as percentile (by school type)



School Mean against Primary State Median



Notes: * The school trendline is being trialled. It is only plotted when there is data for each calendar year.

** If there were 6 or less respondents, table data is not shown for confidentiality reasons. If there were 3 or less respondents, graph data is not shown for confidentiality reasons.

^ The higher the school mean, the more positive the outcome for variables 1 to 15. The lower the school mean, the more positive the outcome for variables 16 to 20.

† The higher the school percentile, the more positive the outcome for all variables.

^^ Benchmarks are available for Primary, Secondary, Pri/Sec, Special & SDS schools.

Performance & Development Culture (P&DC)^{††}

NEW

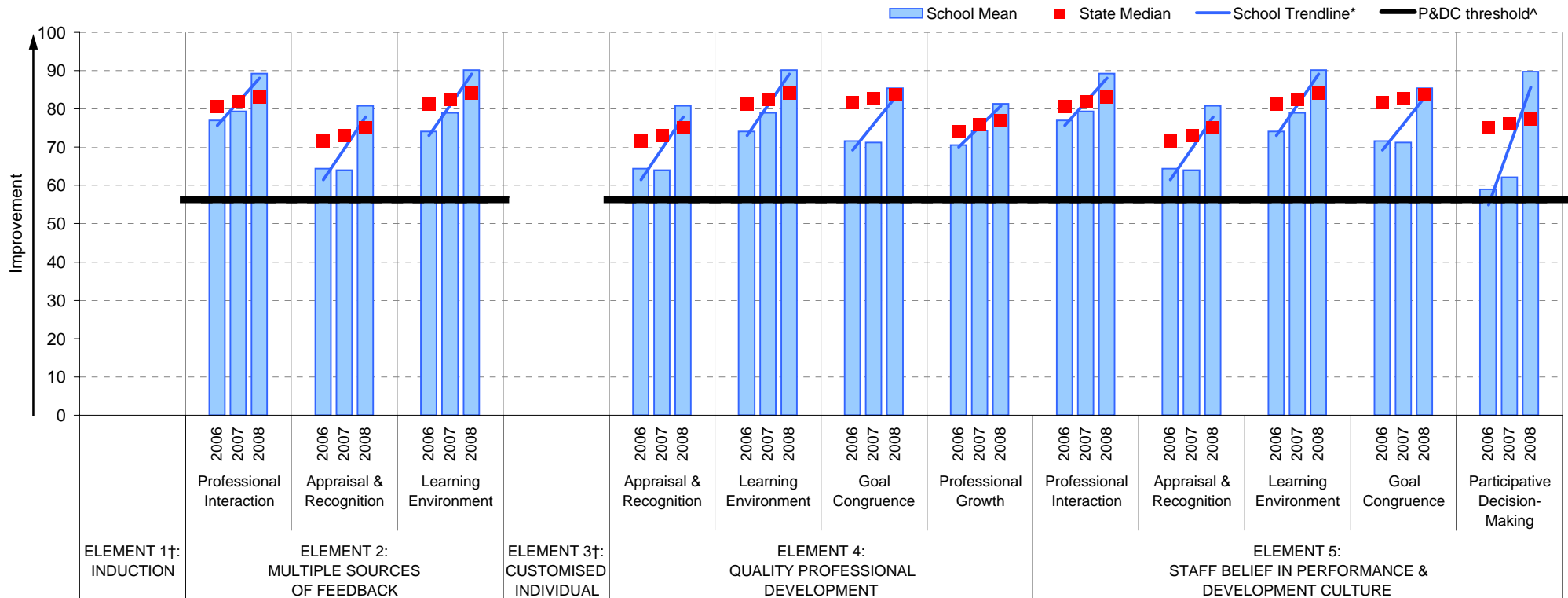
School no: 3659

School name: Spotswood Primary School

Explanation: The data on this page refers to the Staff Opinion Survey.

Source of data: Data transmitted from school staff to DEECD via an online survey application.

School Mean against Primary State Median



Notes:

†† An assessment of the correlation between the P&DC Questionnaire and the Staff Opinion Survey was undertaken using data from Victorian Government schools that completed both surveys 2005 to 2007 (ie. 699 schools). This led to the identification of the components of the Staff Opinion Survey that could be used to assist schools with the ongoing monitoring of their perform and development culture. Refer to the P&DC website for further information: <http://www.education.vic.gov.au/management/schoolimprovement/panddc/default.htm>. For numerical r relating to the above graph, refer to the Staff Opinion Survey page in this rep

† Note that there is no significant correlation between the Staff Opinion Survey and P&DC elements 1 (Induction) and 3 (Customised Individual Development Plc

^ The P&DC threshold was derived from the P&DC Questionnaire 'percent favourable' methodology where a school is considered at the standard of accreditation when their Element score is : favourable (ie. at least 75% of staff selected the top two response categories in the P&DC Questionnai

* The school trendline is only plotted when there is data for each calendar ye.

** If there were 3 or less respondents, graph data is not shown for confidentiality reason

^^ Benchmarks are available for Primary, Secondary, Pri/Sec, Special & SDS school

Staff Sick Leave

School no: 3659

School name: Spotswood Primary School

Explanation: The number of non-certificated and total sick leave days taken per staff member. A detailed explanation on how staff sick leave is calculated is provided at: education.vic.gov.au/management/schoolimprovement/performance/performancefaq.htm.

Source of data: Human Resources Management System (HRMS)^.

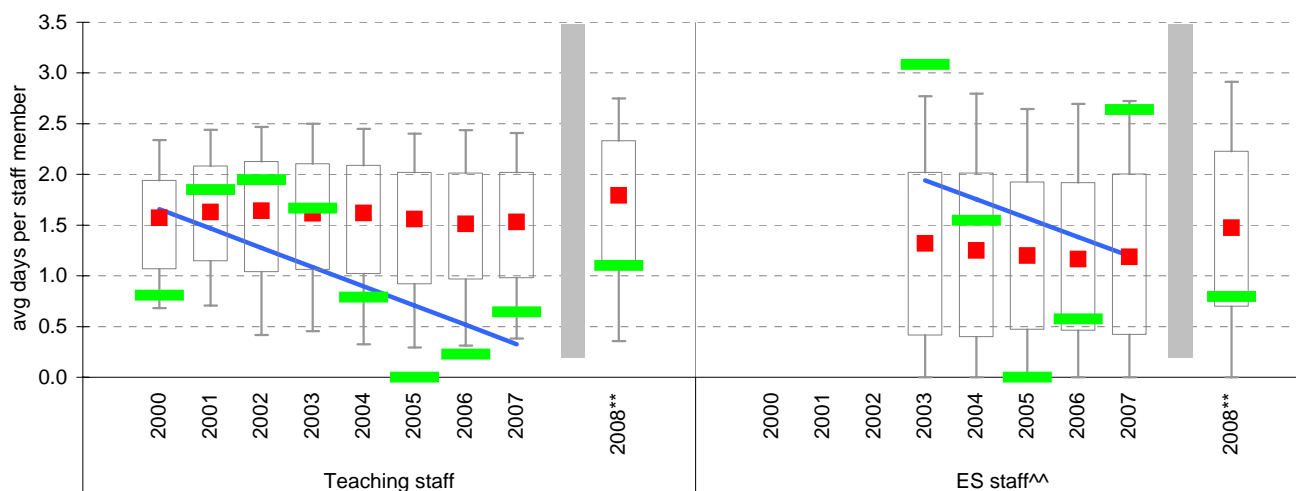
Non-Certificated sick leave days per staff member^

| Staff Type | 2000 | 2001 | 2002 | 2003 | 2004 | 2005 | 2006 | 2007 | 2008** | 2008 State Median** |
|------------|------|------|------|------|------|------|------|------|--------|---------------------|
| Teacher | 0.81 | 1.85 | 1.95 | 1.67 | 0.79 | 0 | 0.23 | 0.65 | 1.10 | 1.79 |
| ES^^ | | | | | 1.55 | 0 | 0.57 | 2.64 | 0.80 | 1.47 |

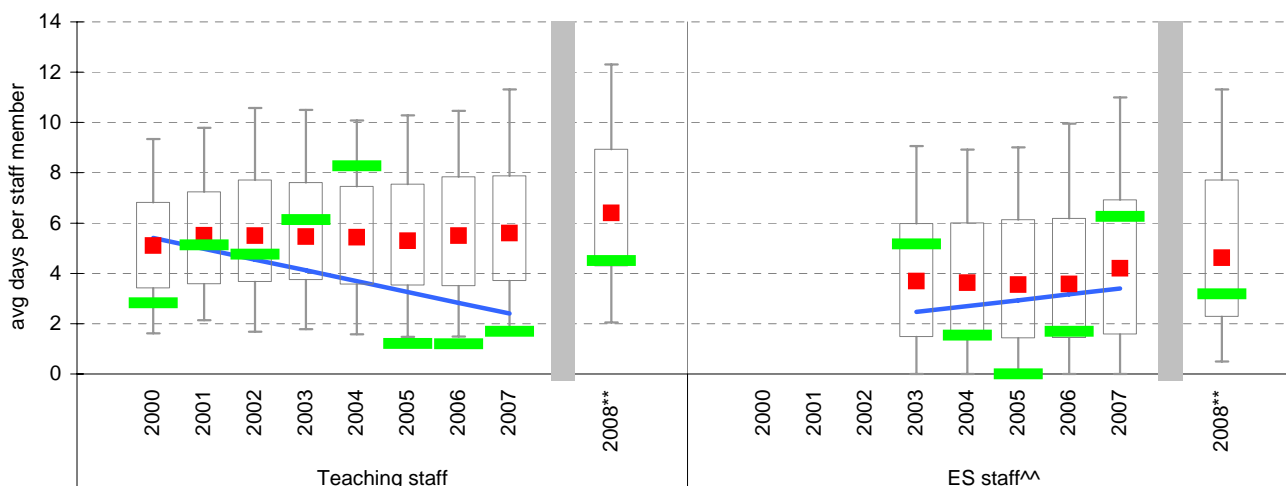
Total sick leave days per staff member^

| Staff Type | 2000 | 2001 | 2002 | 2003 | 2004 | 2005 | 2006 | 2007 | 2008** | 2008 State Median** |
|------------|------|------|------|------|------|------|------|------|--------|---------------------|
| Teacher | 2.82 | 5.13 | 4.76 | 6.14 | 8.27 | 1.21 | 1.20 | 1.69 | 4.50 | 6.40 |
| ES^^ | | | | | 1.55 | 0 | 1.69 | 6.27 | 3.18 | 4.63 |

NON-CERTIFICATED sick leave

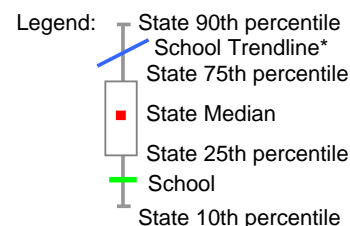


TOTAL sick leave



Notes:

- * The school trendline is only plotted when there is data for each calendar year.
- ** The way in which sick leave data are calculated changed in 2008. As such, data from 2008 cannot be compared with previous years.
- ^ There may be some discrepancy between the results from CASES21 and those from HRMS. The latter are considered to be more accurate.
- ^^ Data for ES (Education Support) staff is only available from 2003. In previous versions of this report, ES staff were known as SSO staff.



Teaching Staff Retention

School no: 3659

School name: Spotswood Primary School

Explanation: The retention rate of teaching staff is determined by matching staff payroll records for the last pay in June of one year (Year A), to the last pay in June of the following year (Year B).

Source of data: Human Resources Management System (HRMS).

Teaching Staff*

| Year A | Year B | Number of Teaching Staff in Year A | Number of Teaching Staff retained in Year B | Teaching Staff Retention Rate | Statewide Average |
|--------|--------|------------------------------------|---|-------------------------------|-------------------|
| 2005 | 2006 | 16 | 13 | 81% | 87% |
| 2006 | 2007 | 14 | 11 | 79% | 86% |
| 2007 | 2008 | 14 | 10 | 71% | 84% |

Of the 16 teaching service staff at June 2005 (including those on leave without pay), 13 or 81% were still at the school at June 2006. This figure across all Government schools was 87%.

Of the 14 teaching service staff at June 2006 (including those on leave without pay), 11 or 79% were still at the school at June 2007. This figure across all Government schools was 86%.

Of the 14 teaching service staff at June 2007 (including those on leave without pay), 10 or 71% were still at the school at June 2008. This figure across all Government schools was 84%.

Ongoing Teaching Staff**

| Year A | Year B | Number of Ongoing Teaching Staff in Year A | Number of Ongoing Teaching Staff retained in Year B | Ongoing Teaching Staff Retention Rate | Statewide Average |
|--------|--------|--|---|---------------------------------------|-------------------|
| 2005 | 2006 | 13 | 12 | 92% | 91% |
| 2006 | 2007 | 12 | 10 | 83% | 90% |
| 2007 | 2008 | 11 | 10 | 91% | 88% |

Of the 13 ongoing teaching service staff at June 2005 (including those on leave without pay), 12 or 92% were still at the school at June 2006. This figure across all Government schools was 91%.

Of the 12 ongoing teaching service staff at June 2006 (including those on leave without pay), 10 or 83% were still at the school at June 2007. This figure across all Government schools was 90%.

Of the 11 ongoing teaching service staff at June 2007 (including those on leave without pay), 10 or 91% were still at the school at June 2008. This figure across all Government schools was 88%.

Notes: * Teaching staff includes Principal class, Teacher class and Instructor class. Teaching staff employed as visiting teachers, guidance officers, curriculum consultants, etc. are excluded as they are not charged to a particular school.

^ Not including fixed term staff, except for where staff had changed from ongoing in Year A to fixed term in Year B.

Bank Balances

School no: 3659

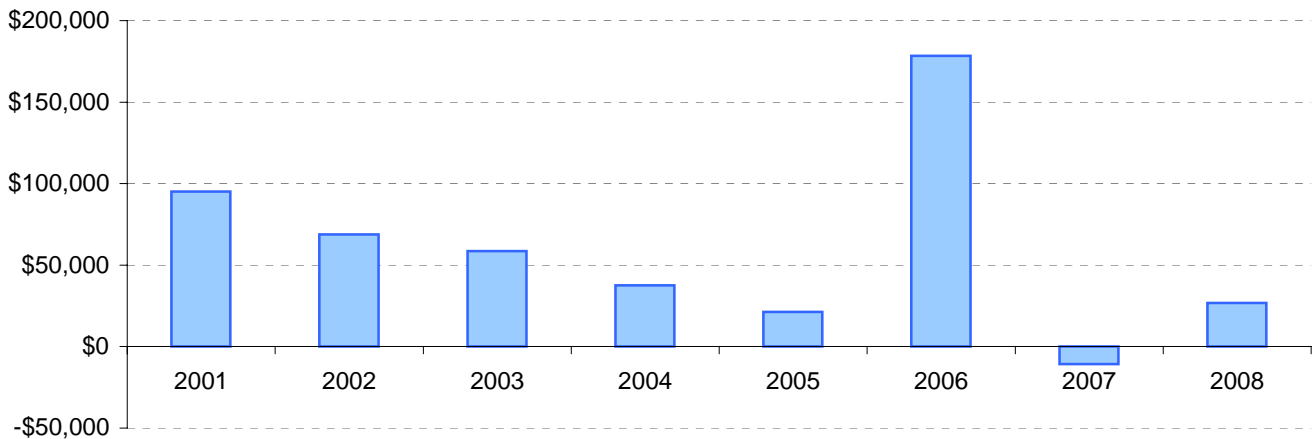
School name: Spotswood Primary School

Explanation: Account balance figures include official and investment accounts, and are calculated by taking the opening balance at 1st January plus the total receipts at 31st December less total payments at 31st December.

Account Balances (Official plus Investment Accounts)

| | | | |
|------|----------|------|-----------|
| 2001 | \$95,173 | 2005 | \$21,343 |
| 2002 | \$68,794 | 2006 | \$178,381 |
| 2003 | \$58,688 | 2007 | -\$10,643 |
| 2004 | \$37,512 | 2008 | \$26,854 |

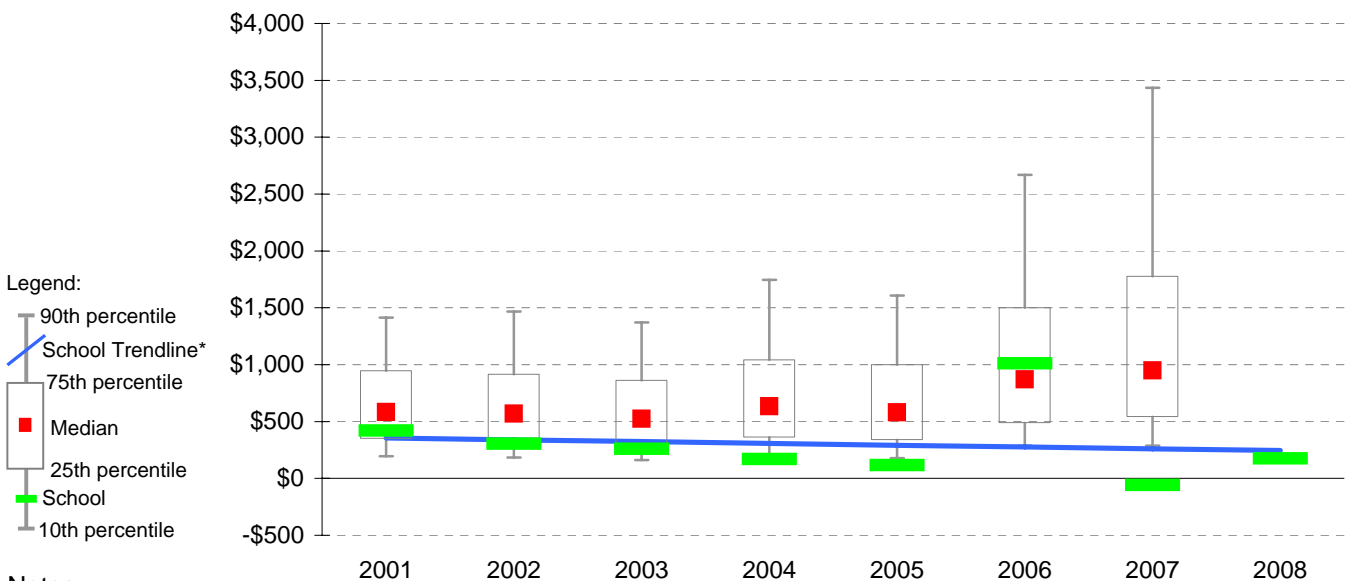
Account Balances



Account Balances (Official plus Investment Accounts) per student[†]

| | | | |
|------|-------|------|---------|
| 2001 | \$420 | 2005 | \$115 |
| 2002 | \$304 | 2006 | \$1,011 |
| 2003 | \$259 | 2007 | -\$58 |
| 2004 | \$171 | 2008 | \$176 |

School account balances per student enrolled in August census plotted on state Primary benchmarks[^]



Notes:

* The school trendline is being trialled. It is only plotted when there is data for each calendar year.

† The account balance per student has been calculated to enable some comparison to be made between schools.

^ Benchmarks for primary, secondary, pri/sec, SDS, special and language schools.